



Ref. Certif. No.

HU-000641

IEC SYSTEM FOR MUTUAL RECOGNITION OF
TEST CERTIFICATES FOR ELECTRICAL
EQUIPMENT (IECEE) CB SCHEMESYSTEME CEI D'ACCEPTATION MUTUELLE DE
CERTIFICATS D'ESSAIS DES EQUIPEMENTS
ELECTRIQUES (IECEE) METHODE OC

CB TEST CERTIFICATE

CERTIFICAT D'ESSAI OC

Product
Produit

Air handling units with heat recovery

Name and address of the applicant
Nom et adresse du demandeurVentilation Systems JSC
1, Mikhaïla Kotzubinskiého St.,
Kiev UA-01030, UkraineName and address of the manufacturer
Nom et adresse du fabricantVentilation Systems JSC
1, Mikhaïla Kotzubinskiého St.,
Kiev UA-01030, UkraineName and address of the factory
Nom et adresse de l'usineVentilation Systems JSC
36, 40-Richchya Str.,
Boyarka 08150, Kiev Region, UkraineNote: When more than one factory, please report on page 2
Note: Lorsque il y a plus d'une usine, veuillez utiliser la 2^{ème} pageRatings and principal characteristics
Valeurs nominales et caractéristiques principales230V 50Hz; 260W, 300W or 390W;
IP22; Class I; Tamb: max. 1-50°CTrademark (if any)
Marque de fabrique (si elle existe)

VENTS

Modell / Type Ref.
Ref. de typeVENTS VUT 350 2,0; VENTS VUT 500 2,0;
VENTS VUT 530 2,0; VENTS VUT 600 2,0;
VENTS VUT 500 2,2; VENTS VUT 530 2,2;
VENTS VUT 600 2,2; VENTS VUT 500 3,0;
VENTS VUT 530 3,0; VENTS VUT 600 3,0Additional information (if necessary may also be
reported on page 2)
Les informations complémentaires (si nécessaire,
peuvent être indiqués sur la 2^{ème} pageThe product was also tested and found to be in
conformity with: EN 60335-2-80:2003 + A1,
EN 60335-1:2002 + A1 + A11 + A12 + A2 + A13, and
EN 50366:2003 + A1.A sample of the product was tested and found to be in
conformity with
Un échantillon de ce produit a été essayé et a été
considéré conforme à la

PUBLICATION

EDITION

IEC 60335-2-80:2002 (ed. 2) + A1
IEC 60335-1:2001 (ed. 4) + A1 + A2As shown in the Test Report Ref. No. which forms
part of this Certificate
Comme indiqué dans le Rapport d'essais numéro de
référence qui constitue partie de ce Certificat

28207536 001

This CB Test Certificate is issued by the National Certification Body
Ce Certificat d'essai OC est établi par l'Organisme National de CertificationHungarian Institute for Testing and Certification of
Electrical Equipment Ltd. (MEEI Kft.)
H-1132 Budapest, Váci út 48/A-B
www.meei.hu

Date:

2009-07-17

Signature:

Janos SZUCS



Test Report issued under the responsibility of:



**TEST REPORT
IEC 60335-2-80**

**Safety of household and similar electrical appliances
Part 2 : Particular requirements for fans**

Report Reference No. : 28207536 001
Compiled by (+ signature)..... : Ferenc Horvát
Approved by (+ signature)..... : Zoltán Zsákai
Date of issue : 06-07-2009
Number of pages : 64
CB Testing Laboratory : Hungarian Institute for Testing and Certification of Electrical Equipment Ltd. (MEEI Kft.) Member of the TÜV Rheinland group
Address : H-1132 Budapest, Váci út 48. a-b. Hungary
Testing location/procedure..... : CBTL [X] SMT [] TMP []
Address : As above

Ferenc Horvát
Zoltán Zsákai

Applicant's name : Ventilation Systems JSC
Address : 1, Mikhaïla Kotzubinskïego St., Kiev, UA-01030, Ukraine

Test specification:
Standard : IEC 60335-2-80:2002 (Second Edition) incl. A1:2004 in conjunction with IEC 60335-1:2001 (Fourth Edition), incl. A1:2004
EN 60335-2-80:2003, incl. A1:2004 in conjunction with EN 60335-1:2002, incl. A11:2004 and A1:2004
EN 50366:2003 + A1:2006
added by MEEI in attachment:
IEC 60335-1:2001 /A2:2006 and EN 60335-1:2002 /A2:2006 /A12:2006/ A13:2008
Test procedure : CB Scheme
Non-standard test method..... : N/A

Test Report Form No. : IEC60335_2_80B_mod
TRF Originator : KEMA (modified by Hungarian Institute for Testing and Certification of Electrical Equipment Kft. (MEEI Kft.) Member of the TÜV Rheinland group)
Master TRF : Dated 2005-06

Copyright © 2004 IEC System for Conformity Testing and Certification of Electrical Equipment (IECEE), Geneva, Switzerland. All rights reserved.
This publication may be reproduced in whole or in part for non-commercial purposes as long as the IECEE is acknowledged as copyright owner and source of the material. IECEE takes no responsibility for and will not assume liability for damages resulting from the reader's interpretation of the reproduced material due to its placement and context.

Test item description : Air handling unit with heat recovery
Trade Mark..... : VENTS
Model/Type reference : VENTS VUT xxx H z; (model list on page 4)
Ratings : 230 V~; 1-50°C; IP 22; for details see 'model list' on page 4

Copy of marking plate and summary of test results (information/comments):

<p>VENTS series VUT VUT 500 H 2,2 230 V~ 50Hz 500 m³/h 300 W 1100 min⁻¹ Tamb = 1 - 50°C</p> <p>⏴ ME 10 CE IP22 ⏵</p>	<p>VENTS series VUT VUT 350 H 2,0 230 V~ 50Hz 350 m³/h 260 W 1150 min⁻¹ Tamb = 1 - 50°C</p> <p>⏴ ME 10 CE IP22 ⏵</p>	<p>VENTS series VUT VUT 500 H 3,0 230 V~ 50Hz 500 m³/h 300 W 1100 min⁻¹ Tamb = 1 - 50°C</p> <p>⏴ ME 10 CE IP22 ⏵</p>
<p>VENTS series VUT VUT 530 H 2,2 230 V~ 50Hz 530 m³/h 300 W 1100 min⁻¹ Tamb = 1 - 50°C</p> <p>⏴ ME 10 CE IP22 ⏵</p>	<p>VENTS series VUT VUT 530 H 2,0 230 V~ 50Hz 530 m³/h 300 W 1100 min⁻¹ Tamb = 1 - 50°C</p> <p>⏴ ME 10 CE IP22 ⏵</p>	<p>VENTS series VUT VUT 530 H 3,0 230 V~ 50Hz 530 m³/h 300 W 1100 min⁻¹ Tamb = 1 - 50°C</p> <p>⏴ ME 10 CE IP22 ⏵</p>
<p>VENTS series VUT VUT 600 H 2,2 230 V~ 50Hz 600 m³/h 390 W 1350 min⁻¹ Tamb = 1 - 50°C</p> <p>⏴ ME 10 CE IP22 ⏵</p>	<p>VENTS series VUT VUT 600 H 2,0 230 V~ 50Hz 600 m³/h 390 W 1350 min⁻¹ Tamb = 1 - 50°C</p> <p>⏴ ME 10 CE IP22 ⏵</p>	<p>VENTS series VUT VUT 600 H 3,0 230 V~ 50Hz 600 m³/h 390 W 1350 min⁻¹ Tamb = 1 - 50°C</p> <p>⏴ ME 10 CE IP22 ⏵</p>

Summary of testing:

Tests were conducted on models VENTS VUT 500 H 2,2. During the documentation check the English User's Manual was evaluated.

Manufacturer: Ventilation Systems JSC 1, Mikhaila Kotzubinskogo St., Kiev, UA-01030, Ukraine

Factory location: Ventilation Systems JSC 36, 40-Richchya Zhovtnya Str. Boyarka 08150, Kiev Region, Ukraine.

The following standard amendments are added by MEEI in the Attachment 1:

- IEC 60335-1:2001 /A2: 2006
- EN 60335-1:2002 /A2: 2006
- EN 60335-1:2002 /A12: 2006
- EN 60335-1:2002 /A13: 2008

Attachments: 1: Standard amendments TRF (16 pages)
2: Measuring equipment list (1 page)

This Test Report consists of two parts.

- first part contains requirements of IEC 60335-2-80:2002 incl. A1:2004 in conjunction with IEC 60335-1:2001, incl. A1:2004; EN 60335-2-80:2003, incl. A1:2004 in conjunction with EN 60335-1:2002, incl. A11:2004 and A1:2004 and EN 50366:2003 + A1:2006
- second part (1. attachment) contains requirements of IEC 60335-1:2001 /A2: 2006, EN 60335-1:2002 /A2: 2006, EN 60335-1:2002 /A12: 2006 /A13: 2008

Fan type	Rated voltage	Rated power [W]	IP protection	Environment maximum temperature [°C]
VENTS VUT 350 2,0	230 V~ 50 Hz	260	IP22	50
VENTS VUT 500 2,0		300		
VENTS VUT 530 2,0		300		
VENTS VUT 600 2,0		390		
VENTS VUT 500 2,2		300		
VENTS VUT 530 2,2		300		
VENTS VUT 600 2,2		390		
VENTS VUT 500 3,0		300		
VENTS VUT 530 3,0		300		
VENTS VUT 600 3,0		390		

Test item particulars	: -
Classification of installation and use	: Class I
Supply Connection	: Permanent connection, supply cord is not provided
Possible test case verdicts:	
- test case does not apply to the test object	: N/A
- test object does meet the requirement.....	: P(Pass)
- test object does not meet the requirement.....	: F(Fail)
Testing	
Date of receipt of test item	: 11-11-2008
Date (s) of performance of tests	: 11-11-2008 — 06-07-2009
General remarks:	
This report is not valid as a CB Test Report unless signed by an approved CB Testing Laboratory and appended to a CB Test Certificate issued by an NCB in accordance with IEC 60335-2-80.	
The test results presented in this report relate only to the object tested. This report shall not be reproduced, except in full, without the written approval of the Issuing testing laboratory.	
"(see Enclosure #)" refers to additional information appended to the report. "(see appended table)" refers to a table appended to the report.	
Throughout this report a point is used as the decimal separator.	
General product information:	
The fans are designed for ventilation of domestic and similar purposes and for continuous operation.	
Meaning of characters in type references:	
VENTS VUT xxx H z	
- 'VENTS':	Trade mark
- 'VUT':	Unit type: ventilation with heat recovery
- 'xxx':	Productivity range [m ³ /h]. It can be: 350; 500; 530; 600.
- 'H':	Arrangement of branch pipes: horizontal
- 'z':	Space between recuperate plates [mm]. It can be: 2,0; 2,2; 3,0.
Possible variants can be seen in table of model list, on page 4.	

IEC 60335-2-80			
Clause	Requirement - Test	Result - Remark	Verdict
5	GENERAL CONDITIONS FOR THE TESTS		P
	Tests performed according to cl. 5, e.g. nature of supply, sequence of testing, etc.		P
5.7	Fans to be used in tropical climates, the tests of clause 10, 11 and 13 are carried out at 40°C +/- 2°C (IEC 60335-2-80)	Not for tropical climates.	N/A
	Fans to be marked with ambient operating temperature, the tests of clause 10, 11 and 13 are carried out at the marked value +/- 2°C (IEC 60335-2-80)		N/A

6	CLASSIFICATION		P
6.1	Protection against electric shock: Class 0, 0I, I, II, III	Class I (see Group differences too)	P
6.2	Protection against harmful ingress of water	IPX2	P
	Duct fans shall be at least IPX2 (IEC 60335-2-80)	See above.	N/A
6.101	Classification to climatic conditions : temperature climates, tropical climates (IEC 60335-2-80)	For temperate climate.	P

7	MARKING AND INSTRUCTIONS		P
7.1	Rated voltage or voltage range (V)	230 V	P
	Nature of supply	~	P
	Rated frequency (Hz)	50 Hz	P
	Rated power input (W)	300	P
	Rated current (A)	Rated power stated.	N/A
	Manufacturer's or responsible vendor's name, trademark or identification mark	VENTS	P
	Model or type reference	See copy of marking plate.	P
	Symbol 5172 of IEC 60417, for Class II appliances		N/A
	IP number, other than IPX0	IP 22 See copy of marking plate.	P
	Symbol IEC 60417-5036, for the enclosure of electrically-operated water valves in external hose-sets for connection of an appliance to the water mains	No water valve.	N/A

IEC 60335-2-80			
Clause	Requirement - Test	Result - Remark	Verdict
	For tropical climates marked with letter T (IEC 60335-2-80)	Not for tropical climates.	N/A
	Fans intended for operation in locations where the local ambient temperature exceeds 40°C marked with ambient operating temperature (IEC 60335-2-80)	T _{ambient} = 1 – 50 °C	P
7.2	Warning for stationary appliances for multiple supply		N/A
	Warning placed in vicinity of terminal cover		N/A
7.3	Range of rated values marked with the lower and upper limits separated by a hyphen		N/A
	Different rated values marked with the values separated by an oblique stroke		N/A
7.4	Appliances adjustable for different rated voltages, the voltage setting is clearly discernible	Not adjustable.	N/A
7.5	Appliances with more than one rated voltage or one or more rated voltage ranges, marked with rated input or rated current for each rated voltage or range, unless		N/A
	the power input is related to the mean value of the rated voltage range		N/A
	Relation between marking for upper and lower limits of rated power input or rated current and voltage is clear		N/A
7.6	Correct symbols used		P
7.7	Connection diagram fixed to appliances to be connected to more than two supply conductors and appliances for multiple supply	Two supply conductors required.	N/A
7.8	Except for type Z attachment, terminals for connection to the supply mains indicated as follows:		P
	- marking of terminals exclusively for the neutral conductor (N)		P
	- marking of protective earthing terminals (symbol 5019 of IEC 60417)		P
	- marking not placed on removable parts		P
7.9	Marking or placing of switches which may cause a hazard	No such switch.	N/A
7.10	Indications of switches on stationary appliances and controls on all appliances by use of figures, letters or other visual means	-30°C...+30°C	P
	The figure 0 indicates only OFF position, unless no confusion with the OFF position		P

IEC 60335-2-80			
Clause	Requirement - Test	Result - Remark	Verdict
7.11	Indication for direction of adjustment of controls		P
7.12	Instructions for safe use provided		P
7.12.1	Sufficient details for installation supplied		P
	Type or model number of luminaries which may be installed for fans intended for this purpose (IEC 60335-2-80)		N/A
	For partition fans, if intended for mounting in outside walls or windows (IEC 60335-2-80)		N/A
	For fans intended to be mounted at high level, fan has to be installed so that the blades are more than 2.3 m above the floor, or windows (IEC 60335-2-80)		N/A
	For duct and partition fans precautions taken to avoid back flow of gases into the room (IEC 60335-2-80)		N/A
	If the instructions state that the guard has to be removed for cleaning purposes, the instructions shall state the substance of the following: "Ensure that the fan is switched off from the supply mains before removing guard." (IEC 60335-2-80)		P
7.12.2	Stationary appliances not fitted with means for disconnection from the supply mains having a contact separation in all poles that provide full disconnection under overvoltage category III, the instructions state that means for disconnection must be incorporated in the fixed wiring in accordance with the wiring rules	User's Manual states the necessary disconnection	P
7.12.3	Insulation of the fixed wiring in contact with parts exceeding 50 K during clause 11; instructions stating that the fixed wiring must be protected		N/A
7.12.4	Instructions for built-in appliances:		N/A
	- dimensions of space	No built-in appliances.	N/A
	- dimensions and position of supporting means		N/A
	- distances between parts and surrounding structure		N/A
	- dimensions of ventilation openings and arrangement		N/A
	- connection to supply mains and interconnection of separate components		N/A
	- allow disconnection of the appliance after installation, by accessible plug or a switch in the fixed wiring, unless		N/A

IEC 60335-2-80			
Clause	Requirement - Test	Result - Remark	Verdict
	a switch complying with 24.3		N/A
7.12.5	Replacement cord instructions, type X attachment with a specially prepared cord		N/A
	Replacement cord instructions, type Y attachment		N/A
	Replacement cord instructions, type Z attachment		N/A
7.12.6	Caution in the instructions for heating appliances with a non-self-resetting thermal cut-out	No heating appliances.	N/A
7.12.7	Instructions for fixed appliances stating how the appliance is to be fixed		P
7.12.8	Instructions for appliances connected to the water mains:		N/A
	- max. inlet water pressure (Pa)..... :	No water mains.	N/A
	- min. inlet water pressure, if necessary (Pa) :	-	N/A
	Instructions concerning new and old hose-sets for appliances connected to the water mains by detachable hose-sets		N/A
7.13	Instructions and other texts in an official language	English and German provided.	P
7.14	Marking clearly legible and durable		P
7.15	Marking on a main part		P
	Marking clearly discernible from the outside, if necessary after removal of a cover		P
	For portable appliances, cover can be removed or opened without a tool		N/A
	For stationary appliances, name, trademark or identification mark and model or type reference visible after installation		P
	For fixed appliances, name, trademark or identification mark and model or type reference visible after installation according to the instructions		P
	Indications for switches and controls placed on or near the components. Marking not on parts which can be positioned or repositioned in such a way that the marking is misleading		P
7.16	Marking of a possible replaceable thermal link or fuse link clearly visible with regard to replacing the link	Non-replaceable thermal link provided.	N/A
8	PROTECTION AGAINST ACCESS TO LIVE PARTS		P
8.1	Adequate protection against accidental contact with live parts		P

IEC 60335-2-80			
Clause	Requirement - Test	Result - Remark	Verdict
8.1.1	Requirement applies for all positions, detachable parts removed		P
	Insertion or removal of lamps, protection against contact with live parts of the lamp cap		N/A
	Use of test probe B of IEC 61032: no contact with live parts		P
8.1.2	Use of test probe 13 of IEC 61032 through openings in class 0 appliances and class II appliances/ constructions: no contact with live parts	No contact.	P
	Test probe 13 also applied through openings in earthed metal enclosures having a non-conductive coating: no contact with live parts		N/A
8.1.3	For appliances other than class II, use of test probe 41 of IEC 61032: no contact with live parts of visible glowing heating elements	No heating elements.	N/A
8.1.4	Accessible part not considered live if:		N/A
	- safety extra-low a.c. voltage: peak value not exceeding 42.4 V		N/A
	- safety extra-low d.c. voltage: not exceeding 42.4 V		N/A
	- or separated from live parts by protective impedance		N/A
	If protective impedance: d.c. current not exceeding 2 mA, and		N/A
	a.c. peak value not exceeding 0.7 mA		N/A
	- for peak values over 42.4 V up to and including 450 V, capacitance not exceeding 0,1 μ F		N/A
	- for peak values over 450 V up to and including 15 kV, discharge not exceeding 45 μ C		N/A
8.1.5	Live parts protected at least by basic insulation before installation or assembly:		P
	- built-in appliances		N/A
	- fixed appliances		P
	- appliances delivered in separate units		N/A
8.2	Class II appliances and constructions constructed so that there is adequate protection against accidental contact with basic insulation and metal parts separated from live parts by basic insulation only	(Class II parts)	P
	Only possible to touch parts separated from live parts by double or reinforced insulation		P

IEC 60335-2-80

Clause	Requirement - Test	Result - Remark	Verdict
	After the removal of detachable parts for the purposes of user maintenance, the basic insulation of internal wiring may be touched provided that it is electrically equivalent to the insulation of cords complying with IEC 60227 or IEC 61245. (IEC 60335-2-80)		N/A

9	STARTING OF MOTOR-OPERATED APPLIANCES		N/A
	Requirements and tests are specified in part 2 when necessary		N/A

10	POWER INPUT AND CURRENT		P
10.1	Power input at normal operating temperature, rated voltage and normal operation not deviating from rated power input by more than shown in table 1	(see appended table)	P
	Shutters or similar devices are in open position (IEC 60335-2-80)		N/A
10.2	Current at normal operating temperature, rated voltage and normal operation not deviating from rated current by more than shown in table 2	Rated current is not marked.	N/A
	Shutters or similar devices are in open position (IEC 60335-2-80)		N/A

11	HEATING		P
11.1	No excessive temperatures in normal use		P
11.2	Placing and mounting of appliance as described		P
11.3	Temperature rises, other than of windings, determined by thermocouples		P
	Temperature rises of windings determined by resistance method, unless		P
	the windings makes it difficult to make the necessary connections		N/A
11.4	Heating appliances operated under normal operation at 1.15 times rated power input	No heating appliances.	N/A
11.5	Motor-operated appliances operated under normal operation at most unfavourable voltage between 0.94 and 1.06 times rated voltage.....	243,8 V (1.06x230 V) was the most unfavourable.	P
11.6	Combined appliances operated under normal operation at most unfavourable voltage between 0.94 and 1.06 times rated voltage.....	-	N/A

IEC 60335-2-80			
Clause	Requirement - Test	Result - Remark	Verdict
11.7	Operation until steady conditions are established (IEC 60335-2-80)		P
11.8	Temperature rises not exceeding values in table 3	(see appended tables)	P
	Sealing compound does not flow out		P
	Protective devices do not operate, except		P
	components in protective electronic circuits tested for the number of cycles specified in 24.1.4		N/A
	Fans for tropical climates: Temperature limits are reduced by 15 K (IEC 60335-2-80)		N/A
	The temperature rise limits for fans marked with an ambient operating temperature are reduced by the difference between the marked value and 25°C (IEC 60335-2-80)	Temperature limits reduced by 25 K, see appended table.	P

13	LEAKAGE CURRENT AND ELECTRIC STRENGTH AT OPERATING TEMPERATURE		P
13.1	Leakage current not excessive and electric strength adequate		P
	Heating appliances operated at 1.15 times rated power input..... :	-	N/A
	Motor-operated appliances and combined appliances supplied at 1.06 times rated voltage	243.8V (1.06x230V)	P
	Protective impedance and radio interference filters disconnected before carrying out the tests		N/A
13.2	Leakage current measured by means of the circuit described in figure 4 of IEC 60990		P
	Leakage current measurements	(see appended table)	P
13.3	The appliance is disconnected from the supply		P
	Electric strength tests according to table 4	(see appended table)	P
	No breakdown during the tests		P

14	TRANSIENT OVERVOLTAGES		N/A
	Appliances withstand the transient overvoltages to which they may be subjected		N/A
	Clearances having a value less than specified in table 16 subjected to an impulse voltage test, the test voltage specified in table 6	Clearances are not less than specified.	N/A
	No flashover during the test, unless of functional insulation		N/A

IEC 60335-2-80			
Clause	Requirement - Test	Result - Remark	Verdict
	In case of flashover of functional insulation, the appliance complies with clause 19 with the clearance short circuited		N/A
15	MOISTURE RESISTANCE		P
15.1	Enclosure provides the degree of moisture protection according to classification of the appliance		P
	Compliance checked as specified in 15.1.1, taking into account 15.1.2, followed by the electric strength test of 16.3		P
	No trace of water on insulation which can result in a reduction of clearances and creepage distances below values specified in clause 29		P
15.1.1	Appliances, other than IPX0, subjected to tests as specified in IEC 60529	Tested for IP X2.	P
	Water valves in external hoses for connection of an appliance to the water mains tested as specified for IPX7 appliances		N/A
	Outer part of fans mounted in external structure of a building, subjected to clause 14.2.4(a) of IEC 60529 (IEC 60335-2-80)		N/A
	Fans marked with the second numeral of the IP system are subjected to the appropriate of IEC 60529 both at rest and in operation while supplied at rated voltage (IEC 60335-2-80)	Tested for IP X2.	P
15.1.2	Hand-held appliance turned continuously through the most unfavourable positions during the test		N/A
	Built-in appliances installed according to the instructions		N/A
	Appliances placed or used on the floor or table placed on a horizontal unperforated support		N/A
	Appliances normally fixed to a wall and appliances with pins for insertion into socket-outlets are mounted on a wooden board		N/A
	For IPX3 appliances, the base of wall mounted appliances is placed at the same level as the pivot axis of the oscillating tube		N/A
	For IPX4 appliances, the horizontal centre line of the appliance is aligned with the pivot axis of the oscillating tube		N/A

IEC 60335-2-80			
Clause	Requirement - Test	Result - Remark	Verdict
	However, for appliances normally used on the floor or table, the movement is limited to two times 90° for a period of 5 min, the support being placed at the level of the pivot axis of the oscillating tube		N/A
	Appliances normally fixed to a ceiling are mounted underneath a horizontal unperforated support, the pivot axis of the oscillating tube located at the level of the underside of the support		N/A
	For IPX4 appliances, the movement of the tube is limited to two times 90° from the vertical for a period of 5 min		N/A
	Wall-mounted appliances, take into account the distance to the floor stated in the instructions		N/A
	Appliances with type X attachment fitted with a flexible cord as described		N/A
	Detachable parts tested as specified		N/A
15.2	Spillage of liquid does not affect the electrical insulation	No spillage in normal condition.	N/A
	Appliances with type X attachment fitted with a flexible cord as described		N/A
	Appliances incorporating an appliance inlet tested with or without an connector, whichever is most unfavourable		N/A
	Detachable parts removed		N/A
	Overfilling test with additional amount of water, over a period of 1 min (l)	-	N/A
	The appliance withstands the electric strength test of 16.3		N/A
	No trace of water on insulation that can result in a reduction of clearances and creepage distances below values specified in clause 29		N/A
15.3	Appliances proof against humid conditions	48h, 95%, 25°C	P
	Humidity test for 48 h in a humidity cabinet		P
	The appliance withstands the tests of clause 16		P
16	LEAKAGE CURRENT AND ELECTRIC STRENGTH		P
16.1	Leakage current not excessive and electric strength adequate		P
	Protective impedance disconnected from live parts before carrying out the tests		N/A

IEC 60335-2-80			
Clause	Requirement - Test	Result - Remark	Verdict
16.2	Single-phase appliances: test voltage 1.06 times rated voltage..... :	243.8V (1.06x230V)	P
	Three-phase appliances: test voltage 1.06 times rated voltage divided by $\sqrt{3}$:	-	N/A
	Leakage current measurements	(See appended table)	P
16.3	Electric strength tests according to table 7	(See appended table)	P
	No breakdown during the tests		P
17	OVERLOAD PROTECTION OF TRANSFORMERS AND ASSOCIATED CIRCUITS		N/A
	No excessive temperatures in transformer or associated circuits in event of short-circuits likely to occur in normal use	No transformers.	N/A
	Appliance supplied with 1.06 or 0.94 times rated voltage and the most unfavourable short-circuit or overload likely to occur in normal use applied..... :	-	N/A
	Temperature rise of insulation of the conductors of safety extra-low voltage circuits not exceeding the relevant value specified in table 3 by more than 15 K		N/A
	Temperature of the winding not exceeding the value specified in table 8,		N/A
	however limits do not apply to fail-safe transformers complying with sub-clause 15.5 of IEC 61558-1		N/A
18	ENDURANCE		N/A
	Requirements and tests are specified in part 2 when necessary	Not applicable.	N/A
19	ABNORMAL OPERATION		P
19.1	The risk of fire or mechanical damage under abnormal or careless operation obviated		P
	Electronic circuits so designed and applied that a fault will not render the appliance unsafe	No electronic circuits.	N/A
	Fans incorporating shutters or similar subjected to the test of cl. 19.101 (IEC 60335-2-80)	See cl. 19.101.	N/A
19.2	Test of appliance with heating elements with restricted heat dissipation; test voltage (V): power input of 0.85 times rated power input..... :	-	N/A
19.3	Test of 19.2 repeated; test voltage (V): power input of 1.24 times rated power input..... :	-	N/A

IEC 60335-2-80			
Clause	Requirement - Test	Result - Remark	Verdict
19.4	Test conditions as in cl. 11, any control limiting the temperature during tests of cl. 11 short-circuited		N/A
19.5	Test of 19.4 repeated on Class 0I and I appliances with tubular sheathed or embedded heating elements. No short-circuiting, but one end of the element connected to the elements sheath		N/A
	The test repeated with reversed polarity and the other end of the heating element connected to the sheath		N/A
	The test is not carried out on appliances intended to be permanently connected to fixed wiring and on appliances where an all-pole disconnection occurs during the test of 19.4		N/A
19.6	Appliances with PTC heating elements tested at rated voltage, establishing steady conditions	No PTC.	N/A
	The working voltage of the PTC heating element is increased by 5% and the appliance is operated until steady conditions are re-established. The voltage is then increased in similar steps until 1.5 times working voltage or until the PTC heating element ruptures		N/A
19.7	Stalling test by locking the rotor if the locked rotor torque is smaller than the full load torque or locking moving parts of other appliances		P
	Locked rotor, motor capacitors open-circuited or short-circuited, if required		P
	Locked rotor, capacitors open-circuited one at a time		P
	Test repeated with capacitors short-circuited one at a time, if required		P
	Appliances with timer or programmer supplied with rated voltage for each of the tests, for a period equal to the maximum period allowed		N/A
	Other appliances supplied with rated voltage for a period as specified		P
	Separate controls are mounted on a dull-black plywood board (IEC 60335-2-80)	No such controls.	N/A
	Approximately 50% of the area of each ventilation opening is blocked (IEC 60335-2-80)		N/A
	Winding temperatures not exceeding values specified in table 8	(See appended table)	P
	Temperature of the dull black-painted board for the separate control do not exceed: - 50K, for appliance with T marking - 65K, for other appliances (IEC 60335-2-80)	No such controls.	N/A

IEC 60335-2-80			
Clause	Requirement - Test	Result - Remark	Verdict
19.8	Three-phase motors operated at rated voltage with one phase disconnected	Single-phase motors.	N/A
19.10	Series motor operated at 1.3 times rated voltage for 1 min.....	No series motor.	N/A
	During the test, parts not being ejected from the appliance		N/A
19.11	Electronic circuits, compliance checked by evaluation of the fault conditions specified in 19.11.2 for all circuits or parts of circuits, unless they comply with the conditions specified in 19.11.1	No electronic circuit	N/A
	Appliances incorporating a protective electronic circuit subjected to the tests of 19.11.3 and 19.11.4		N/A
	Appliances having a switch with an off position obtained by electronic disconnection, or a switch placing the appliance in a stand-by mode, subjected to the tests of 19.11.4		N/A
19.11.1	Before applying the fault conditions a) to f) in 19.11.2, it is checked if circuits or parts of circuit meet both of the following conditions:		N/A
	- the electronic circuit is a low-power circuit, that is, the maximum power at low-power points does not exceed 15 W according to the tests specified		N/A
	- the protection against electric shock, fire hazard, mechanical hazard or dangerous malfunction in other parts of the appliance does not rely on the correct functioning of the electronic circuit		N/A
19.11.2	Fault conditions applied one at a time, the appliance operated under conditions specified in cl. 11, but supplied at rated voltage, the duration of the tests as specified:		
	a) short circuit of functional insulation if clearances or creepage distances are less than the values specified in 29		N/A
	b) open circuit at the terminals of any component		N/A
	c) short circuit of capacitors, unless they comply with IEC 60384-14		N/A
	d) short circuit of any two terminals of an electronic component, other than integrated circuits. This fault condition is not applied between the two circuits of an optocoupler		N/A
	e) failure of triacs in the diode mode		N/A
	f) failure of an integrated circuit		N/A
19.11.3	If the appliance incorporates a protective electronic circuit which operates to ensure compliance with clause 19, the relevant test is repeated with a single fault simulated, as indicated in a) to f) of 19.11.2	No protective electronic circuit.	N/A

IEC 60335-2-80			
Clause	Requirement - Test	Result - Remark	Verdict
	During and after each test the following is checked:		N/A
	- the temperature rise of the windings do not exceed the values specified in table 8		N/A
	- the appliance complies with the conditions specified in 19.13		N/A
	- any current flowing through protective impedance not exceeding the limits specified in 8.1.4		N/A
	If a conductor of a printed board becomes open-circuited, the appliance is considered to have withstood the particular test, provided all three of the following conditions are met:		N/A
	- the material of the printed circuit board withstands the burning test of annex E		N/A
	- any loosened conductor does not reduce the clearances or creepage distances between live parts and accessible metal parts below the values specified in cl. 29		N/A
	- the appliance withstands the tests of 19.11.2 with open-circuited conductor bridged		N/A
19.11.4	Appliances having a switch with an off position obtained by electronic disconnection, or		N/A
	a switch that can be placed in the stand-by mode,		N/A
	subjected to the tests of 19.11.4.1 to 19.11.4.7		N/A
	Appliances incorporating a protective electronic circuit subjected to the tests of 19.11.4.1 to 19.11.4.7, except that		N/A
	appliances operated for 30 s or 5 min during the test of 19.7 are not subjected to the tests for electromagnetic phenomena.		N/A
19.11.4.1	The appliance is subjected to electrostatic discharges in accordance with IEC 61000-4-2, test level 4		N/A
19.11.4.2	The appliance is subjected to radiated fields in accordance with IEC 61000-4-3, test level 3		N/A
19.11.4.3	The appliance is subjected to fast transient bursts in accordance with IEC 61000-4-4, test level 3 or 4 as specified		N/A
19.11.4.4	The power supply terminals of the appliance subjected to voltage surges in accordance with IEC 61000-4-5, test level 3 or 4 as specified		N/A
	Earthed heating elements in class I appliances disconnected		N/A
19.11.4.5	The appliance is subjected to injected currents in accordance with IEC 61000-4-6, test level 3		N/A

IEC 60335-2-80			
Clause	Requirement - Test	Result - Remark	Verdict
19.11.4.6	The appliance is subjected to voltage dips and interruptions in accordance with IEC 61000-4-11		N/A
19.11.4.7	The appliance is subjected to mains signals in accordance with IEC 61000-4-13, test level class 2		N/A
19.12	If the safety of the appliance for any of the fault conditions specified in 19.11.2 depends on the operation of a miniature fuse-link complying with IEC 60127, the test is repeated, measuring the current flowing through the fuse-link; measured current (A); rated current of the fuse-link (A)..... :	None.	N/A
19.13	During the tests the appliance does not emit flames, molten metal, poisonous or ignitable gas in hazardous amounts		P
	Temperature rises not exceeding the values shown in table 9	(see appended table)	P
	Enclosures not deformed to such an extent that compliance with cl. 8 is impaired		P
	If the appliance can still be operated it complies with 20.2		P
	Insulation, other than of class III appliance, withstand the electric strength test of 16.3, the test voltage specified in table 4:		P
	- basic insulation..... :	Live and metal surface and motor surface (1000V)	P
	- supplementary insulation..... :	Both of sides of enclosure (1750V) (Class II parts)	P
	- reinforced insulation..... :	-	N/A
	The appliance does not undergo a dangerous malfunction, and		P
	no failure of protective electronic circuits, if the appliance is still operable		N/A
	Appliances tested with an electronic switch in the off position or in the stand-by mode, do not become operational		N/A
19.101	Fans incorporating shutters or similar that are operated automatically are supplied at rated voltage in the closed or open position, whichever is more unfavourable (IEC 60335-2-80)	No shutter	N/A
20	STABILITY AND MECHANICAL HAZARDS		P
20.1	Adequate stability	Appliance shall be installed properly according to the User's Manual.	N/A

IEC 60335-2-80			
Clause	Requirement - Test	Result - Remark	Verdict
	Tilting test through an angle of 10° (appliance placed on an inclined plane/horizontal plane); appliance does not overturn		N/A
	Tilting test repeated on appliances with heating elements, angle of inclination increased to 15°		N/A
	Possible heating test in overturned position; temperature rise does not exceed values shown in table 9		N/A
	Portable pedestal fans exceeding 1,7 m and exceeding 10 kg tested with a force of 40 N at 1,5 m (IEC 60335-2-80)	No such fans.	N/A
20.2	Moving parts adequately arranged or enclosed as to provide protection against personal injury		P
	Protective enclosures, guards and similar parts are non-detachable		P
	Adequate mechanical strength and fixing of protective enclosures		P
	Self-resetting thermal cut-outs and overcurrent protective devices not causing a hazard, by unexpected reclosure		P
	Not possible to touch dangerous moving parts with test probe		P
20.101	Fan blades, other than those for mounting at high level, shall be guarded, unless (IEC 60335-2-80)	Blades are guarded after the installation according the User's Manual by the duct	P
21	MECHANICAL STRENGTH		P
21.1	Appliance has adequate mechanical strength and is constructed as to withstand rough handling		P
	Checked by applying blows to the appliance in accordance with test Ehb of IEC 60068-2-75, spring hammer test, impact energy 0,5 J		P
	If necessary, supplementary or reinforced insulation subjected to the electric strength test of 16.3		N/A
	If necessary, repetition of groups of three blows on a new sample		N/A
21.2	Accessible parts of solid insulation having strength to prevent penetration by sharp implements		P
	The insulation is tested as specified, unless		N/A
	the thickness of supplementary insulation is at least 1 mm and reinforced insulation is at least 2 mm		P

IEC 60335-2-80			
Clause	Requirement - Test	Result - Remark	Verdict
21.101	Fan guards are subjected to a push and pull force of 20 N. Dangerous moving parts are not accessible (IEC 60335-2-80)	Blades are guarded after the installation according the User's Manual by the duct	P
21.102	Ceiling fans have adequate strength. (IEC 60335-2-80)		P
	Load four times the mass of the fan is suspended from the body of the fan for 1 min. (IEC 60335-2-80)		P
	A torque of 1 Nm is then applied to the fixed body of the fan for 1 min. The test is repeated with the torque applied the reverse direction. (IEC 60335-2-80)		P

22	CONSTRUCTION		P
22.1	Appliance marked with the first numeral of the IP system, relevant requirements of IEC 60529 are fulfilled		N/A
22.2	Stationary appliance: means to provide all-pole disconnection from the supply provided, the following means being available:		P
	- a supply cord fitted with a plug		N/A
	- a switch complying with 24.3	No switch with all-pole disconnection.	N/A
	- a statement in the instruction sheet that a disconnection incorporated in the fixed wiring is to be provided	Statement in the User's Manual.	P
	- an appliance inlet	No appliance inlet.	N/A
	Single-pole switches and single-pole protective devices for the disconnection of heating elements in single-phase permanently connected class I appliances, connected in the phase conductor		N/A
22.3	Appliance provided with pins: no undue strain on socket-outlets	No pins.	N/A
	Applied torque not exceeding 0.25 Nm		N/A
	Pull force of 50N to each pin after the appliance has being placed in the heating cabinet; when cooled to room temperature the pins are not displaced by more than 1mm		N/A
	Each pin subjected to a torque of 0.4Nm; the pins are not rotating unless rotating does not impair compliance with the standard		N/A
22.4	Appliance for heating liquids and appliance causing undue vibration not provided with pins for insertion into socket-outlets	No such appliance.	N/A

IEC 60335-2-80			
Clause	Requirement - Test	Result - Remark	Verdict
22.5	No risk of electric shock when touching the pins of the plug, the appliance being disconnected from the supply at the instant of voltage peak.		N/A
22.6	Electrical insulation not affected by condensing water or leaking liquid		N/A
	Electrical insulation of Class II appliances not affected in case of a hose rupture or seal leak		N/A
22.7	Adequate safeguards against the risk of excessive pressure in appliances provided with steam-producing devices	No steam.	N/A
22.8	Electrical connections not subject to pulling during cleaning of compartments to which access can be gained without the aid of a tool, and that are likely to be cleaned in normal use	No such cleaning.	N/A
22.9	Insulation, internal wiring, windings, commutators and slip rings not exposed to oil, grease or similar substances		P
	Adequate insulating properties of oil or grease to which insulation is exposed		N/A
22.10	Not possible to reset voltage-maintained non-self-resetting thermal cut-outs by the operation of an automatic switching device incorporated within the appliance	No such kind of devices.	N/A
	Non-self resetting thermal motor protectors have a trip-free action, unless		N/A
	they are voltage maintained		N/A
	Location or protection of reset buttons of non-self-resetting controls is so that accidental resetting is unlikely		N/A
22.11	Reliable fixing of non-detachable parts that provide the necessary degree of protection against electric shock, moisture or contact with moving parts		P
	Obvious locked position of snap-in devices used for fixing such parts		N/A
	No deterioration of the fixing properties of snap-in devices used in parts that are likely to be removed during installation or servicing		N/A
	Tests as described		P
22.12	Handles, knobs etc. fixed in a reliable manner		N/A
	Fixing in wrong position of handles, knobs etc. indicating position of switches or similar components not possible		N/A

IEC 60335-2-80			
Clause	Requirement - Test	Result - Remark	Verdict
	Axial force 15 N applied to parts, the shape being so that an axial pull is unlikely to be applied		N/A
	Axial force 30 N applied to parts, the shape being so that an axial pull is likely to be applied		N/A
22.13	Unlikely that handles, when gripped as in normal use, make the operators hand touch parts having a temperature rise exceeding the value specified for handles which are held for short periods only		N/A
22.14	No ragged or sharp edges creating a hazard for the user in normal use, or during user maintenance	Verified by visual inspection.	P
	No exposed pointed ends of self tapping screws etc., liable to be touched by the user in normal use or during user maintenance		P
22.15	Storage hooks and the like for flexible cords smooth and well rounded		N/A
22.16	Automatic cord reels cause no undue abrasion or damage to the sheath of the flexible cord, no breakage of conductors strands, no undue wear of contacts	No automatic cord reel.	N/A
	Cord reel tested with 6000 operations, as specified		N/A
	Electric strength test of 16.3, voltage of 1000 V applied		N/A
22.17	Spacers not removable from the outside by hand or by means of a screwdriver or a spanner	No spacers.	N/A
22.18	Current-carrying parts and other metal parts resistant to corrosion under normal conditions of use		P
22.19	Driving belts not used as electrical insulation	No driving belt.	N/A
22.20	Direct contact between live parts and thermal insulation effectively prevented, unless material used is non-corrosive, non-hygroscopic and non-combustible		N/A
	Compliance is checked by inspection and, if necessary, by appropriate test		N/A
22.21	Wood, cotton, silk, ordinary paper and fibrous or hygroscopic material not used as insulation, unless impregnated	No such material.	P
22.22	Appliances not containing asbestos	No asbestos.	P
22.23	Oils containing polychlorinated biphenyl (PCB) not used		P
22.24	Bare heating elements adequately supported	No heating elements.	N/A
	In case of rupture, the heating conductor is unlikely to come in contact with accessible metal parts		N/A

IEC 60335-2-80			
Clause	Requirement - Test	Result - Remark	Verdict
22.25	Sagging heating conductors cannot come into contact with accessible metal parts		N/A
22.26	The insulation between parts operating at safety extra-low voltage and other live parts complies with the requirements for double or reinforced insulation	No such parts.	N/A
22.27	Parts connected by protective impedance separated by double or reinforced insulation	No protective impedance.	N/A
22.28	Metal parts of Class II appliances conductively connected to gas pipes or in contact with water: separated from live parts by double or reinforced insulation		N/A
22.29	Class II appliances permanently connected to fixed wiring so constructed that the required degree of access to live parts is maintained after installation	Compliance is checked by visual inspection. (Class II part)	P
22.30	Parts serving as supplementary or reinforced insulation fixed so that they cannot be removed without being seriously damaged, or		N/A
	so constructed that they cannot be replaced in an incorrect position, and so that if they are omitted, the appliance is rendered inoperable or manifestly incomplete		P
22.31	Clearances and creepage distances over supplementary and reinforced insulation not reduced below values specified in clause 29 as a result of wear		P
	Clearances and creepage distances between live parts and accessible parts not reduced below values for supplementary insulation, if wires, screws etc. become loose		P
22.32	Supplementary and reinforced insulation designed or protected against deposition of dirt or dust		P
	Supplementary insulation of natural or synthetic rubber resistant to ageing, or arranged and dimensioned so that creepage distances are not reduced below values specified in 29.2		N/A
	Ceramic material not tightly sintered, similar material or beads alone not used as supplementary or reinforced insulation		N/A
	Oxygen bomb test at 70 °C for 96 h and 16 h at room temperature		N/A
22.33	Conductive liquids that are or may become accessible in normal use are not in direct contact with live parts	No liquid.	N/A
	Electrodes not used for heating liquids		N/A

IEC 60335-2-80

Clause	Requirement - Test	Result - Remark	Verdict
	For class II constructions, conductive liquids that are or may become accessible in normal use, not in direct contact with basic or reinforced insulation		N/A
	For class II constructions, conductive liquids which are in contact with live parts, not in direct contact with reinforced insulation		N/A
22.34	Shafts of operating knobs, handles, levers etc. not live, unless the shaft is not accessible when the part is removed		N/A
22.35	Handles, levers and knobs, held or actuated in normal use, not becoming live in the event of an insulation fault	Not hand-held use.	N/A
	Such parts being of metal, and their shafts or fixings are likely to become live in the event of an insulation fault, they are either adequately covered by insulation material, or their accessible parts are separated from their shafts or fixings by supplementary insulation		N/A
	This requirement does not apply to handles, levers and knobs on stationary appliances other than those of electrical components, provided they are either reliably connected to an earthing terminal or earthing contact, or separated from live parts by earthed metal		N/A
22.36	Handles continuously held in the hand in normal use are so constructed that when gripped as in normal use, the operators hand is not likely to touch metal parts, unless they are separated from live parts by double or reinforced insulation	Not hand-held use.	N/A
22.37	Capacitors in Class II appliances not connected to accessible metal parts, unless complying with 22.42		N/A
	Metal casings of capacitors in Class II appliances separated from accessible metal parts by supplementary insulation, unless complying with 22.42		N/A
22.38	Capacitors not connected between the contacts of a thermal cut-out		P
22.39	Lamp holders used only for the connection of lamps		N/A
22.40	Motor-operated appliances and combined appliances intended to be moved while in operation, or having accessible moving parts, fitted with a switch to control the motor. The actuating member of the switch being easily visible and accessible	Not movable appliance.	N/A
22.41	No components, other than lamps, containing mercury	No mercury.	P
22.42	Protective impedance consisting of at least two separate components		N/A

IEC 60335-2-80			
Clause	Requirement - Test	Result - Remark	Verdict
	Values specified in 8.1.4 not exceeded if any one of the components are short-circuited or open-circuited		N/A
22.43	Appliances adjustable for different voltages, accidental changing of the setting of the voltage unlikely to occur	Not adjustable.	N/A
22.44	Appliances are not allowed to have an enclosure that is shaped and decorated so that the appliance is likely to be treated as a toy by children	Not like a toy.	P
22.45	When air is used as reinforced insulation, clearances not reduced below the values specified in 29.1.4 due to deformation as a result of an external force applied to the enclosure		N/A
22.46	Software used in protective electronic circuits is software class B or C	No software.	N/A
22.47	Appliances connected to the water mains withstand the water pressure expected in normal use	No connection to the water.	N/A
	No leakage from any part, including any inlet water hose		N/A
22.48	Appliances connected to the water mains constructed to prevent backsiphonage of non-potable water		N/A
22.101	Appliances having provision for attaching a luminaire incorporate appropriate terminals and internal wiring (IEC 60335-2-80)		N/A

23	INTERNAL WIRING		P
23.1	Wireways smooth and free from sharp edges		P
	Wires protected against contact with burrs, cooling fins etc.		P
	Wire holes in metal well rounded or provided with bushings	No such parts.	N/A
	Wiring effectively prevented from coming into contact with moving parts	The internal wiring is properly fixed.	P
23.2	Beads etc. on live wires cannot change their position, and are not resting on sharp edges or corners	No beads.	N/A
	Beads inside flexible metal conduits contained within an insulating sleeve		N/A
23.3	Electrical connections and internal conductors movable relatively to each other not exposed to undue stress		N/A
	Flexible metallic tubes not causing damage to insulation of conductors	No such parts.	N/A

IEC 60335-2-80			
Clause	Requirement - Test	Result - Remark	Verdict
	Open-coil springs not used		N/A
	Adequate insulating lining provided inside a coiled spring, the turns of which touch one another		N/A
	No damage after 100 000 flexings for conductors flexed during normal use and at rated voltage (IEC 60335-2-80)		N/A
	Electric strength test, 1000 V between live parts and accessible metal parts		N/A
23.4	Bare internal wiring sufficiently rigid and fixed	No bare internal wiring.	N/A
23.5	The insulation of internal wiring withstanding the electrical stress likely to occur in normal use		P
	No breakdown when a voltage of 2000 V is applied for 15 min between the conductor and metal foil wrapped around the insulation		P
23.6	Sleeving used as supplementary insulation on internal wiring retained in position by positive means		N/A
23.7	The colour combination green/yellow used only for earthing conductors		P
23.8	Aluminium wires not used for internal wiring	No aluminium wire.	P
23.9	No lead-tin soldering of stranded conductors where they are subject to contact pressure, unless	No soldering for this reason.	P
	clamping means so constructed that there is no risk of bad contact due to cold flow of the solder		N/A
23.10	The insulation and sheath of internal wiring, incorporated in external hoses for the connection of an appliance to the water mains, at least equivalent to that of light polyvinyl chloride sheathed flexible cord (60227 IEC 52)		N/A

24	COMPONENTS		P
24.1	Components comply with safety requirements in relevant IEC standards		N/A
	List of components	(see appended table)	P
	Components not tested and found to comply with relevant IEC standard for the number of cycles specified are tested in accordance with 24.1.1 to 24.1.6		N/A
	Components not tested and found to comply with relevant IEC standard, components not marked or not used in accordance with its marking, tested under the conditions occurring in the appliance		P

IEC 60335-2-80			
Clause	Requirement - Test	Result - Remark	Verdict
24.1.1	Capacitors likely to be permanently subjected to the supply voltage and used for radio interference suppression or for voltage dividing, complying with IEC 60384-14, or		N/A
	tested according to annex F		N/A
24.1.2	Safety isolating transformers complying with IEC 61558-2-6, or	No transformers.	N/A
	tested according to annex G		N/A
24.1.3	Switches complying with IEC 61058-1, the number of cycles of operation being at least 10 000, or		N/A
	tested according to annex H		P
	If the switch operates a relay or contactor, the complete switching system is subjected to the test		N/A
24.1.4	Automatic controls complying with IEC 60730-1 with relevant part 2. The number of cycles of operation being:		N/A
	- thermostats: 10 000		P
	- temperature limiters: 1 000		N/A
	- self-resetting thermal cut-outs: 300		P
	- voltage maintained non-self-resetting thermal cut-outs: 1000		N/A
	- other non-self-resetting thermal cut-outs: 30		N/A
	- timers: 3 000		N/A
	- energy regulators: 10 000		N/A
	Thermal motor protectors are tested in combination with their motor under the conditions specified in Annex D		N/A
	For water valves containing live parts and that are incorporated in external hoses for connection of an appliance to the water mains, the degree of protection declared for subclause 6.5.2 of IEC 60730-2-8 is IPX7		N/A
24.1.5	Appliance couplers complying with IEC 60320-1	No appliance coupler.	N/A
	However, appliances classified higher than IPX0, the appliance couplers complying with IEC 60320-2-3		N/A
	Interconnection couplers complying with IEC 60320-2-2		N/A
24.1.6	Small lamp holders similar to E10 lampholders complying with IEC 60238, the requirements for E10 lampholders being applicable		N/A

IEC 60335-2-80			
Clause	Requirement - Test	Result - Remark	Verdict
24.2	Switches or automatic controls in flexible cords are allowed for appliances not exceeding 25 W (IEC 60335-2-80)	No switch in flexible cords.	N/A
	No devices causing the protective device in the fixed wiring to operate in the event of a fault in the appliance		N/A
	No thermal cut-outs that can be reset by soldering		N/A
24.3	Switches intended for all-pole disconnection of stationary appliances are directly connected to the supply terminals and having a contact separation in all poles, providing full disconnection under overvoltage category III conditions		N/A
24.4	Plugs and socket-outlets for extra-low voltage circuits and heating elements, not interchangeable with plugs and socket-outlets listed in IEC 60083 or IEC 60906-1 or with connectors and appliance inlets complying with the standard sheets of IEC 60320-1	No such appliance or circuit.	N/A
24.5	Capacitors in auxiliary windings of motors marked with their rated voltage and capacitance and used accordingly	No auxiliary windings.	N/A
	Voltage across capacitors in series with a motor winding does not exceed 1,1 times rated voltage, when the appliance is supplied at 1,1 times rated voltage under minimum load		N/A
24.6	Working voltage of motors connected to the supply mains and having basic insulation that is inadequate for the rated voltage of the appliance, not exceeding 42V		N/A
	In addition, the motors are complying with the requirements of Annex I		N/A
24.7	Hose-sets for connection of appliances to the water mains, complying with IEC 61770 and supplied with the appliance		N/A
24.101	Thermal cut-outs in duct fans in order to comply with cl. 19 are not self-resetting (IEC 60335-2-80)		N/A
25	SUPPLY CONNECTION AND EXTERNAL FLEXIBLE CORDS		P
25.1	Appliance not intended for permanent connection to fixed wiring, means for connection to the supply:		N/A
	- supply cord fitted with a plug		N/A
	- an appliance inlet having at least the same degree of protection against moisture as required for the appliance		N/A

IEC 60335-2-80			
Clause	Requirement - Test	Result - Remark	Verdict
	- pins for insertion into socket-outlets		N/A
25.2	Appliance not provided with more than one means of connection to the supply mains	Only one supply connection.	P
	Stationary appliance for multiple supply may be provided with more than one means of connection, provided electric strength test of 1250 V for 1 min between each means of connection causes no breakdown		N/A
25.3	Connection of supply conductors for appliance intended to be permanently connected to fixed wiring possible after the appliance has been fixed to its support		P
	Appliance provided with a set of terminals for the connection of cables or fixed wiring, cross-sectional areas specified in 26.6		N/A
	Appliance provided with a set of terminals allowing the connection of a flexible cord		P
	Appliance provided with a set of supply leads accommodated in a suitable compartment		N/A
	Appliance provided with a set of terminals and cable entries, conduit entries, knock-outs or glands, allowing connection of appropriate type of cable or conduit		N/A
25.4	Cable and conduit entries, rated current of appliance not exceeding 16 A, dimension according to table 10		P
	Introduction of conduit or cable does not reduce clearances or creepage distances below values specified in 29		P
25.5	Method for assemble supply cord with the appliance:		N/A
	- type X attachment		N/A
	- type Y attachment		N/A
	- type Z attachment is allowed for portable fans (IEC 60335-2-80)		N/A
	Type X attachment, other than those with a specially prepared cord, not used for flat twin tinsel cords		N/A
25.6	Plugs fitted with only one flexible cord		N/A
25.7	Supply cord not lighter than:		N/A
	- braided cord (60245 IEC 51)	Not provided.	N/A
	- ordinary tough rubber sheathed cord (60245 IEC 53)		N/A

IEC 60335-2-80			
Clause	Requirement - Test	Result - Remark	Verdict
	- ordinary polychloroprene sheathed flexible cord (60245 IEC 57)		N/A
	- flat twin tinsel cord (60227 IEC 41)		N/A
	- light polyvinyl chloride sheathed cord (60227 IEC 52), appliance not exceeding 3 kg		N/A
	- ordinary polyvinyl chloride sheathed cord (60227 IEC 53), appliance exceeding 3 kg		N/A
	Temperature rise of external metal parts exceeding 75 K, PVC cord not used, unless		N/A
	appliance so constructed that the supply cord is not likely to touch external metal parts in normal use, or		N/A
	the supply cord is appropriate for higher temperatures, type Y or type Z attachment used		N/A
25.8	Nominal cross-sectional area of supply cords according to table 11; rated current (A); cross-sectional area (mm ²)	Not provided.	N/A
25.9	Supply cord not in contact with sharp points or edges		N/A
25.10	Green/yellow core for earthing purposes in Class I appliance		N/A
25.11	Conductors of supply cords not consolidated by lead-tin soldering where they are subject to contact pressure, unless		N/A
	clamping means so constructed that there is no risk of bad contacts due to cold flow of the solder		N/A
25.12	Moulding the cord to part of the enclosure does not damage the insulation of the supply cord		N/A
25.13	Inlet opening so shaped as to prevent damage to the supply cord		P
	Unless the enclosure at the inlet opening is of insulation material, a non-detachable lining or bushing complying with 29.3 for supplementary insulation provided		N/A
	If unsheathed supply cord, a similar additional bushing or lining is required, unless		N/A
	the appliance is class 0		N/A
25.14	Supply cords adequately protected against excessive flexing		N/A
	Flexing test:		N/A
	- applied force (N)	-	N/A
	- number of flexing	-	N/A

IEC 60335-2-80			
Clause	Requirement - Test	Result - Remark	Verdict
	The test does not result in:		N/A
	- short circuit between the conductors		N/A
	- breakage of more than 10% of the strands of any conductor		N/A
	- separation of the conductor from its terminal		N/A
	- loosening of any cord guard		N/A
	- damage, within the meaning of the standard, to the cord or the cord guard		N/A
	- broken strands piercing the insulation and becoming accessible		N/A
25.15	Conductors of the supply cord relieved from strain, twisting and abrasion by use of cord anchorage	Cord anchorage provided.	P
	The cord cannot be pushed into the appliance to such an extent that the cord or internal parts of the appliance can be damaged		P
	Pull and torque test of supply cord, values shown in table 10: pull (N); torque (not on automatic cord reel) (Nm)..... :	100 N; 0,35 Nm	P
	Max. 2 mm displacement of the cord, and conductors not moved more than 1 mm in the terminals		P
	Creepage distances and clearances not reduced below values specified in 29.1		P
25.16	Cord anchorages for type X attachments constructed and located so that:		N/A
	- replacement of the cord is easily possible		N/A
	- it is clear how the relief from strain and the prevention of twisting are obtained		N/A
	- they are suitable for different types of cord		N/A
	- cord cannot touch the clamping screws of cord anchorage if these screws are accessible, unless separated from accessible metal parts by supplementary insulation		N/A
	- the cord is not clamped by a metal screw which bears directly on the cord		N/A
	- at least one part of the cord anchorage securely fixed to the appliance, unless part of a specially prepared cord		N/A
	- screws which have to be operated when replacing the cord do not fix any other component, if applicable		N/A
	- if labyrinths can be bypassed the test of 25.15 is nevertheless withstood		N/A

IEC 60335-2-80			
Clause	Requirement - Test	Result - Remark	Verdict
	- for Class 0, 0I and I appliances: they are of insulating material or are provided with an insulating lining, unless a failure of the insulation of the cord does not make accessible metal parts live		N/A
	- for Class II appliances: they are of insulating material, or if of metal, they are insulated from accessible metal parts by supplementary insulation		N/A
25.17	Adequate cord anchorages for type Y and Z attachment		N/A
25.18	Cord anchorages only accessible with the aid of a tool, or		P
	so constructed that the cord can only be fitted with the aid of a tool		N/A
25.19	Type X attachment, glands not used as cord anchorage in portable appliances		N/A
	Tying the cord into a knot or tying the cord with string not used		N/A
25.20	Conductors of the supply cord for type Y and Z attachment adequately additionally insulated		N/A
25.21	Space for supply cord for type X attachment or for connection of fixed wiring constructed to permit checking of conductors with respect to correct positioning and connection before fitting any cover, no risk of damage to the conductors when fitting the cover, no contact with accessible metal parts if a conductor becomes loose, etc.		P
	For portable appliances, the uninsulated end of a conductor prevented from any contact with accessible metal parts, unless the end of the cord is such that the conductors are unlikely to slip free		N/A
25.22	Appliance inlet:		N/A
	- live parts not accessible during insertion or removal		N/A
	- connector can be inserted without difficulty		N/A
	- the appliance is not supported by the connector		N/A
	- is not for cold conditions if temp. rise of external metal parts exceeds 75 K, unless the supply cord is not likely to touch such metal parts		N/A
25.23	Interconnection cords comply with the requirements for the supply cord, except as specified.	No interconnection cord.	N/A
	If necessary, electric strength test of 16.3		N/A
25.24	Interconnection cords not detachable without the aid of a tool if compliance with the standard is impaired when they are disconnected		N/A

IEC 60335-2-80			
Clause	Requirement - Test	Result - Remark	Verdict
25.25	Dimensions of pins compatible with the dimensions of the relevant socket-outlet. Dimensions of pins and engagement face in accordance with the relevant plug in IEC 60083		N/A
26	TERMINALS FOR EXTERNAL CONDUCTORS		P
26.1	Appliances provided with terminals or equally effective devices for connection of external conductors	Terminal block provided.	P
	Terminals only accessible after removal of a non-detachable cover		P
	However, earthing terminals may be accessible if a tool is required to make the connections and means are provided to clamp the wire independently from its connection		N/A
26.2	Appliances with type X attachment and appliances for connection to fixed wiring provided with terminals in which connections are made by means of screws, nuts or similar devices, unless the connections are soldered	By screw.	P
	Screws and nuts serve only to clamp supply conductors, except		P
	internal conductors, if so arranged that they are unlikely to be displaced when fitting the supply conductors		P
	If soldered connections used, the conductor so positioned or fixed that reliance is not placed on soldering alone	Soldered connection is not used.	N/A
	Soldering alone used, barriers provided, clearances and creepage distances satisfactory if the conductor becomes free at the soldered joint		N/A
26.3	Terminals for type X attachment and for connection to fixed wiring so constructed that the conductor is clamped between metal surfaces with sufficient contact pressure and without damaging the conductor		P
	Terminals for type X attachment and those for connection to fixed wiring so fixed that when tightening or loosening the clamping means:		P
	- the terminal does not loosen		P
	- internal wiring is not subjected to stress		P
	- clearances and creepage distances are not reduced below the values in 29		P

IEC 60335-2-80			
Clause	Requirement - Test	Result - Remark	Verdict
	Compliance checked by inspection and by the test of subclause 8.6 of IEC 60999-1, the torque applied being equal to two-thirds of the torque specified. Nominal diameter of thread (mm); screw category; torque (Nm)..... :	0,28	P
26.4	Terminals for type X attachment, except those with a specially prepared cord, and those for connection to fixed wiring, no special preparation of conductors required, and so constructed or placed that conductors prevented from slipping out		P
26.5	Terminals for type X attachment so located or shielded that if a wire of a stranded conductor escapes, no risk of accidental connection to other parts that result in a hazard		N/A
	Stranded conductor test, 8 mm insulation removed		N/A
	No contact between live parts and accessible metal parts and, for class II constructions, between live parts and metal parts separated from accessible metal parts by supplementary insulation only		N/A
26.6	Terminals for type X attachment and for connection to fixed wiring suitable for connection of conductors with required cross-sectional area according to table 13; rated current (A); nominal cross-sectional area (mm ²)..... :	Terminal block is suitable for connection up to 2,5 mm ² rated current < 3A.	P
	Terminals only suitable for a specially prepared cord		N/A
26.7	Terminals for type X attachment accessible after removal of a cover or part of the enclosure		N/A
26.8	Terminals for the connection to fixed wiring, including the earthing terminal, located close to each other		P
26.9	Terminals of the pillar type constructed and located as specified		P
26.10	Terminals with screw clamping and screwless terminals not used for flat twin tinsel cords, unless conductors ends fitted with a device suitable for screw terminals		N/A
	Pull test of 5 N to the connection		N/A
26.11	For type Y and Z attachment: soldered, welded, crimped and similar connections may be used		N/A
	For Class II appliances: the conductor so positioned or fixed that reliance is not placed on soldering, welding or crimping alone		N/A

IEC 60335-2-80			
Clause	Requirement - Test	Result - Remark	Verdict
	For Class II appliances: soldering, welding or crimping alone used, barriers provided, clearances and creepage distances satisfactory if the conductor becomes free		N/A

27	PROVISION FOR EARTHING		P
27.1	Accessible metal parts of Class 0I and I appliances, permanently and reliably connected to an earthing terminal or contact of the appliance inlet		P
	Earthing terminals not connected to neutral terminal		P
	Class 0, II and III appliance have no provision for earthing		N/A
	Safety extra-low voltage circuits not earthed, unless protective extra-low voltage circuits		N/A
27.2	Clamping means adequately secured against accidental loosening		P
	Terminals used for the connection of external equipotential bonding conductors allow connection of conductors of 2.5 to 6 mm ² , and		N/A
	do not provide earthing continuity between different parts of the appliance		N/A
	Conductors cannot be loosened without the aid of a tool		P
27.3	For detachable parts that are plugged into another part of the appliance, and having an earth connection, the earth connection made before and separated after current-carrying connections when removing the part		N/A
	For appliances with supply cord, current-carrying conductors become taut before earthing conductor, if the cord slips out of the cord anchorage		N/A
27.4	No risk of corrosion resulting from contact between metal of earthing terminal and other metal		P
	Adequate resistance to corrosion of coated or uncoated parts providing earthing continuity, other than parts of a metal frame or enclosure		N/A
	Parts of steel providing earthing continuity provided at the essential areas with an electroplated coating, thickness at least 5 µm		N/A
	Adequate protection against rusting of parts of coated or uncoated steel, only intended to provide or transmit contact pressure		P

IEC 60335-2-80			
Clause	Requirement - Test	Result - Remark	Verdict
	In case of aluminium alloys precautions taken to avoid risk of corrosion		N/A
27.5	Low resistance of connection between earthing terminal and earthed metal parts		P
	This requirement does not apply to connections providing earthing continuity in the protective extra-low voltage circuit, provided that clearances of basic insulation are based on the rated voltage of the appliance		N/A
	Resistance not exceeding 0,1 Ω at the specified low-resistance test		P
27.6	The printed conductors of printed circuit boards not used to provide earthing continuity in hand held appliances		N/A
	They may be used in other appliances if:		N/A
	- at least two tracks are used with independent soldering points and the appliance complies with requirements of 27.5 for each circuit		N/A
	- the material of the printed circuit board complies with IEC 60249-2-4 or IEC 60249-2-5		N/A

28	SCREWS AND CONNECTIONS		P
28.1	Fixings, electrical connections and connections providing earthing continuity withstand mechanical stresses		P
	Screws not of soft metal liable to creep, such as zinc or aluminium	Only metal screws used.	P
	Diameter of screws of insulating material min. 3 mm		N/A
	Screws of insulating material not used for any electrical connection or connections providing earthing continuity		N/A
	Screws used for electrical connections or connections providing earthing continuity screw into metal		P
	Screws not of insulating material if their replacement by a metal screw can impair supplementary or reinforced insulation		N/A
	Type X attachment, screws to be removed for replacement of supply cord or for user maintenance, not of insulating material if their replacement by a metal screw can impair basic insulation		N/A
	For screws and nuts; test as specified	(see appended table)	P

IEC 60335-2-80			
Clause	Requirement - Test	Result - Remark	Verdict
28.2	Electrical connections and connections providing earthing continuity constructed so that contact pressure not transmitted through insulating material liable to shrink or distort, unless shrinkage or distortion compensated		N/A
	This requirement does not apply to electrical connections in circuits carrying a current not exceeding 0.5A		N/A
28.3	Space-threaded (sheet metal) screws only used for electrical connections if they clamp the parts together		N/A
	Thread-cutting (self-tapping) screws only used for electrical connections if they generate a full form standard machine screw threa		N/A
	Such screws not used if they are likely to be operated by the user or installer unless the thread is formed by a swaging action		N/A
	Thread-cutting and space-threaded screws may be used in connections providing earthing continuity, provided unnecessary to disturb the connection and at least two screws are used for each connection		N/A
28.4	Screws and nuts that make mechanical connection secured against loosening if they also make electrical connections or connections providing earthing continuity	Mechanical connection does not serve electrical connection.	N/A
	Rivets for electrical connections or connections providing earthing continuity secured against loosening if subjected to torsion		N/A

29	CLEARANCES, CREEPAGE DISTANCES AND SOLID INSULATION		P
	Clearances, creepage distances and solid insulation withstand electrical stress		P
	For coatings used on printed circuits boards to protect the microenvironment (Type A) or to provide basic insulation (Type B), annex J applies	-	N/A
	The microenvironment is pollution degree 1 under Type A coating		N/A
	No creepage distance or clearance requirements under Type B coating		N/A
29.1	Clearances not less than the values specified in table 16, taking into account the rated impulse voltage for the overvoltage categories of table 15, unless		P
	for basic insulation and functional insulation they comply with the implulse voltage test of clause 14		N/A

IEC 60335-2-80

Clause	Requirement - Test	Result - Remark	Verdict
	However, if the construction is affected by wear, distortion, movement of the parts or during assembly, the clearances for rated impulse voltages of 1500V and above are increased by 0,5 mm and the impulse voltage test is not applicable		N/A
	Impulse voltage test not applicable:		P
	- when the microenvironment is pollution degree 3		P
	- for basic insulation of class 0 and class 01 appliances		N/A
	Appliances are in overvoltage category II	Considered	P
	Clearances less than specified in table 16 not allowed for basic insulation of class 0 and class 01 appliances,		N/A
	or if pollution degree 3 is applicable		P
	Compliance is checked by inspection and measurements as specified		P
29.1.1	Clearances of basic insulation withstand the overvoltages, taking into account the rated impulse voltage		P
	Clearance at the terminals of tubular sheathed heating elements may be reduced to 1mm if the microenvironment is pollution degree 1		N/A
	Lacquered conductors of windings considered to be bare conductors		N/A
29.1.2	Clearances of supplementary insulation not less than those specified for basic insulation in table 16		P
29.1.3	Clearances of reinforced insulation not less than those specified for basic insulation in table 16, but using the next higher step for rated impulse voltage		N/A
29.1.4	For functional insulation, the values of table 16 are applicable, unless		P
	the appliance complies with clause 19 with the functional insulation short-circuited		N/A
	Lacquered conductors of windings considered to be bare conductors		N/A
	However, clearances at crossover points are not measured		N/A
	Clearance between surfaces of PTC heating elements may be reduced to 1mm		N/A

IEC 60335-2-80			
Clause	Requirement - Test	Result - Remark	Verdict
29.1.5	Appliances having higher working voltage than rated voltage, the voltage used for determining clearances from table 16 is the sum of the rated impulse voltage and the difference between the peak value of the working voltage and the peak value of the rated voltage		N/A
	If the secondary winding of a step-down transformer is earthed, or if there is an earthed screen between the primary and secondary windings, clearances of basic insulation on the secondary side not less than those specified in table 16, but using the next lower step for rated impulse voltage		N/A
	Circuits supplied with a voltage lower than rated voltage, clearances of functional insulation based on the working voltage used as the rated voltage in table 15		N/A
29.2	Creepage distances not less than those appropriate for the working voltage, taking into account the material group and the pollution degree		P
	Pollution degree 2 applies, unless		N/A
	precautions taken to protect the insulation; pollution degree 1		N/A
	insulation subjected to conductive pollution; pollution degree 3		P
	Microenvironment is pollution degree 3 unless insulation is enclosed or located that it is unlikely to be exposed to pollution during normal use (IEC 60335-2-80)		P
	Compliance is checked by inspection and measurements as specified		P
29.2.1	Creepage distances of basic insulation not less than specified in table 17		P
	For pollution degree 1, creepage distance not less than the minimum specified for the clearance in table 16, if the clearance has been checked according to the test of clause 14		N/A
29.2.2	Creepage distances of supplementary insulation at least as specified for basic insulation in table 17		P
29.2.3	Creepage distances of reinforced insulation at least double as specified for basic insulation in table 17		N/A
29.2.4	Creepage distances of functional insulation not less than specified in table 18		P

IEC 60335-2-80			
Clause	Requirement - Test	Result - Remark	Verdict
	Creepage distances may be reduced if the appliance complies with clause 19 with the functional insulation short-circuited		N/A
29.3	Supplementary and reinforced insulation having adequate thickness, or a sufficient number of layers, to withstand the electrical stresses		P
	Compliance checked by:		P
	- measurement, in accordance with 29.3.1, or		P
	- an electric strength test in accordance with 29.3.2, or		N/A
	- an assessment of the thermal quality of the material combined with an electric strength test, in accordance with 29.3.3		N/A
29.3.1	Supplementary insulation having a thickness of at least 1 mm		P
	Reinforced insulation having a thickness of at least 2 mm		N/A
29.3.2	Each layer of material withstand the electric strength test of 16.3 for supplementary insulation		N/A
	Supplementary insulation consisting of at least 2 layers		N/A
	Reinforced insulation consisting of at least 3 layers		N/A
29.3.3	The insulation is subjected to the dry heat test Bb of IEC 60068-2-2, followed by		N/A
	the electric strength test of 16.3		N/A
	If the temperature rise during the tests of Clause 19 does not exceed the value specified in Table 3, the test of IEC 60068-2-2 is not carried out		N/A

30	RESISTANCE TO HEAT AND FIRE		P
30.1	External parts of non-metallic material,		P
	parts supporting live parts, and		P
	thermoplastic material providing supplementary or reinforced insulation,		P
	sufficiently resistant to heat		P
	Ball-pressure test according to IEC 60695-10-2		P
	External parts: at 40 °C plus the maximum temperature rise determined during the test of clause 11, or at 75 °C, whichever is the higher; temperature (°C)	Enclosure tested on 75°C	P

IEC 60335-2-80			
Clause	Requirement - Test	Result - Remark	Verdict
	Parts supporting live parts: at 40°C plus the maximum temperature rise determined during the test of clause 11, or at 125°C, whichever is the higher; temperature (°C)	-	N/A
	Parts of thermoplastic material providing supplementary or reinforced insulation, 25°C plus the maximum temperature rise determined during clause 19, if higher; temperature (°C)	Enclosure tested on 75°C	P
30.2	Relevant parts of non-metallic material adequately resistant to ignition and spread of fire		P
30.2.1	Glow-wire test of IEC 60695-2-11 at 550 °C, unless	Enclosure.	P
	the material is classified at least HB40 according to IEC 60695-11-10		N/A
	Parts for which the glow-wire test cannot be carried out meet the requirements in ISO9772 for category HBF material		N/A
30.2.3	Appliances operated while unattended, tested as specified in 30.2.3.1 and 30.2.3.2		P
	Test not applicable to conditions as specified		P
30.2.3.1	Parts of insulating material supporting connections carrying a current exceeding 0.2A during normal operation, and		P
	parts of insulating material within a distance of 3mm,		N/A
	having a glow-wire flammability index of at least 850°C according to IEC 60695-2-12		P
30.2.3.2	Parts of insulating material supporting current-carrying connections, and		P
	parts of insulating material within a distance of 3mm,		N/A
	subjected to glow-wire test of IEC 60695-2-11		P
	Test not carried out on material having a glow-wire ignition temperature according to IEC 60695-2-13 as specified		N/A
	Glow-wire test of IEC 60695-2-11, the temperature being:		N/A
	-775°C, for connections carrying a current exceeding 0,2A during normal operation		N/A
	-650°C, for other connections		N/A
	Parts that during the test produce a flame persisting longer than 2 s, tested as specified		N/A

IEC 60335-2-80			
Clause	Requirement - Test	Result - Remark	Verdict
	If a flame persists longer than 2 s during the test, parts above the connection, as specified, subjected to the needle-flame test of annex E, unless		N/A
	the material is classified as V-0 or V-1 according to IEC 60695-11-10		N/A
30.2.4	Base material of printed circuit boards subjected to needle-flame test of annex E		N/A
	Test not applicable to conditions as specified		N/A

31	RESISTANCE TO RUSTING		P
	Relevant ferrous parts adequately protected against rusting		P

32	RADIATION, TOXICITY AND SIMILAR HAZARDS		N/A
	Appliance does not emit harmful radiation		N/A
	Appliance does not present a toxic or similar hazard		N/A

A	ANNEX A (INFORMATIVE) ROUTINE TESTS		N/A
	Description of routine tests to be carried out by the manufacturer		N/A

B	ANNEX B (NORMATIVE) APPLIANCES POWERED BY RECHARGEABLE BATTERIES		N/A
	The following modifications to this standard are applicable for appliances powered by batteries that are recharged in the appliance	No batteries.	N/A
	This annex does not apply to battery chargers		N/A
3.1.9	Appliance operated under the following conditions:		N/A
	-the appliance, supplied by its fully charged battery, operated as specified in relevant part 2		N/A
	-the battery is charged, the battery being initially discharged to such an extent that the appliance cannot operate		N/A
	-if possible, the appliance is supplied from the supply mains through its battery charger, the battery being initially discharged to such an extent that the appliance cannot operate. The appliance is operated as specified in relevant part 2		N/A

IEC 60335-2-80			
Clause	Requirement - Test	Result - Remark	Verdict
	If the appliance incorporates inductive coupling between two parts that are detachable from each other, the appliance is supplied from the supply mains with the detachable part removed		N/A
3.6.2	Part to be removed in order to discard the battery is not considered to be detachable		N/A
5.101	Appliances supplied from the supply mains tested as specified for motor-operated appliances		N/A
7.1	Battery compartment for batteries intended to be replaced by the user, marked with battery voltage and polarity of the terminals		N/A
7.12	The instructions for appliances incorporating batteries intended to be replaced by the user includes required information		N/A
	Details about how to remove batteries containing materials hazardous to the environment given		N/A
7.15	Markings placed on the part of the appliance connected to the supply mains		N/A
8.2	Appliances having batteries that according to the instruction may be replaced by the user need only have basic insulation between live parts and the inner surface of the battery compartment		N/A
	If the appliance can be operated without batteries, double or reinforced insulation required		N/A
11.7	The battery is charged for the period described		N/A
19.1	Appliances subjected to tests of 19.101, 19.102 and 19.103		N/A
19.101	Appliances supplied at rated voltage for 168 h, the battery being continually charged		N/A
19.102	Short-circuiting of the terminals of the battery, being fully charged, for appliances having batteries that can be removed without the aid of a tool		N/A
19.103	Appliances having batteries replaceable by the user supplied at rated voltage under normal operation with the battery removed or in any position allowed by the construction		N/A
21.101	Appliances having pins for insertion into socket-outlets have adequate mechanical strength, checked according to procedure 2 of IEC 68-2-32		N/A
	Part of the appliance incorporating the pins subjected to the free fall test, procedure 2, of IEC 60068-2-32, the number of falls being:		N/A
	- 100, the mass of part does not exceed 250 g		N/A
	- 50, the mass of part exceeds 250 g		N/A

IEC 60335-2-80			
Clause	Requirement - Test	Result - Remark	Verdict
	After the test, the requirements of 8.1, 15.1.1, 16.3 and clause 29 are met		N/A
22.3	Appliances having pins for insertion into socket-outlets tested as fully assembled as possible		N/A
25.13	An additional lining or bushing not required for interconnection cords operating at safety extra-low voltage		N/A
30.2	For parts of the appliance connected to the supply mains during the charging period, 30.2.3 applies		N/A
	For other parts, 30.2.2 applies		N/A
C	ANNEX C (NORMATIVE) AGEING TEST ON MOTORS		N/A
	Tests, as described, carried out when doubt with regard to the temperature classification of the insulation of a motor winding		N/A
D	ANNEX D (NORMATIVE) THERMAL MOTOR PROTECTORS		P
	Applicable to appliances having motors that incorporate thermal motor protectors		P
E	ANNEX E (NORMATIVE) NEEDLE-FLAME TEST		N/A
	Needle-flame test carried out in accordance with IEC 60695-2-2, with the following modifications:		N/A
5	Severities		N/A
	The duration of application of the test flame is 30 s \pm 1 s		N/A
8	Test procedure		N/A
8.2	The specimen so arranged that the flame can be applied to a vertical or horizontal edge as shown in the examples of figure 1		N/A
8.4	The first paragraph does not apply		N/A
	If possible, the flame is applied at least 10 mm from a corner		N/A
8.5	The test is carried out on one specimen		N/A
	If the specimen does not withstand the test, the test may be repeated on two further specimens, both withstanding the test		N/A

IEC 60335-2-80

Clause	Requirement - Test	Result - Remark	Verdict
10	Evaluation of test results		N/A
	The duration of burning not exceeding 30 s		N/A
	However, for printed circuit boards, the duration of burning not exceeding 15 s		N/A

F	ANNEX F (NORMATIVE) CAPACITORS		N/A
	Capacitors likely to be permanently subjected to the supply voltage, and used for radio interference suppression or voltage dividing, comply with the following clauses of IEC 60384-14, with the following modifications:		N/A
1.5	Terminology		N/A
1.5.3	Class X capacitors tested according to subclass X2		N/A
1.5.4	This subclause is applicable		N/A
1.6	Marking		N/A
	Items a) and b) are applicable		N/A
3.4	Approval testing		N/A
3.4.3.2	Table II is applicable as described		N/A
4.1	Visual examination and check of dimensions		N/A
	This subclause is applicable		N/A
4.2	Electrical tests		N/A
4.2.1	This subclause is applicable		N/A
4.2.5	This subclause is applicable		N/A
4.2.5.2	Only table IX is applicable		N/A
	Values for test A apply		N/A
	However, for capacitors in heating appliances the values for test B or C apply		N/A
4.12	Damp heat, steady state		N/A
	This subclause is applicable		N/A
	Only insulation resistance and voltage proof are checked		N/A
4.13	Impulse voltage		N/A
	This subclause is applicable		N/A
4.14	Endurance		N/A
	Subclauses 4.14.1, 4.14.3, 4.14.4 and 4.14.7 applicable		N/A

IEC 60335-2-80			
Clause	Requirement - Test	Result - Remark	Verdict
4.14.7	Only insulation resistance and voltage proof are checked		N/A
	Visual examination, no visible damage		N/A
4.17	Passive flammability test		N/A
	This subclause is applicable		N/A
4.18	Active flammability test		N/A
	This subclause is applicable		N/A

G	ANNEX G (NORMATIVE) SAFETY ISOLATING TRANSFORMERS		N/A
	The following modifications to this standard are applicable for safety isolating transformers:	No transformers.	N/A
7	Marking and instructions		N/A
7.1	Transformers for specific use marked with:		N/A
	-name, trademark or identification mark of the manufacturer or responsible vendor		N/A
	-model or type reference		N/A
17	Overload protection of transformers and associated circuits		N/A
	Fail-safe transformers comply with subclause 15.5 of IEC 61558-1		N/A
22	Construction		N/A
	Subclauses 19.1 and 19.1.2 of IEC 61558-2-6 are applicable		N/A
29	Clearances, creepage distances and solid insulation		N/A
29.1, 29.2 and 29.3	The distances specified in items 2a, 2c and 3 in table 13 of IEC 61558-1 apply		N/A

H	ANNEX H (NORMATIVE) SWITCHES		
	Switches comply with the following clauses of IEC 61058-1, as modified:		P
	-The tests of IEC 61058-1 carried out under the conditions occurring in the appliance		P
	-Before being tested, switches are operated 20 times without load		P
8	Marking and documentation		
	Switches are not required to be marked		P

IEC 60335-2-80			
Clause	Requirement - Test	Result - Remark	Verdict
	However, switches that can be tested separately from the appliance marked with the manufacturer's name or trade mark and the type reference		N/A
13	Mechanism		P
	The tests may be carried out on a separate sample		P
15	Insulation resistance and dielectric strength		P
15.1	Not applicable		P
15.2	Not applicable		P
15.3	Applicable for full disconnection and micro-disconnection		P
17	Endurance		P
	Compliance is checked on three separate appliances or switches		N/A
	For 17.2.4.4, the number of cycles is 10 000, unless otherwise specified in 24.1.3 of the relevant part 2 of IEC 60335		N/A
	Switches for operation under no load and which can be operated only by a tool and switches operated by hand that are interlocked so that they cannot be operated under load, are not subjected to the tests		N/A
	Subclauses 17.2.2 and 17.2.5.2 not applicable		P
	The ambient temperature during the test is that occurring in the appliance during the test of Clause 11 in IEC 60335-1		N/A
	Temperature rise of the terminals not more than 30 K above the temperature rise measured in clause 11 of IEC 60335-1		N/A
20	Clearances, creepage distances, solid insulation and coatings of rigid printed board assemblies		P
	This clause is applicable to clearances and creepage distances for functional insulation, across full disconnection and micro-disconnection, as stated in table 24		P

I	ANNEX I (NORMATIVE) MOTORS HAVING BASIC INSULATION THAT IS INADEQUATE FOR THE RATED VOLTAGE OF THE APPLIANCE		N/A
	The following modifications to this standard are applicable for motors having basic insulation that is inadequate for the rated voltage of the appliance:		N/A
8	Protection against access to live parts		N/A

IEC 60335-2-80			
Clause	Requirement - Test	Result - Remark	Verdict
8.1	Metal parts of the motor are considered to be bare live parts		N/A
11	Heating		N/A
11.3	Temperature rise of the body of the motor is determined instead of the temperature rise of the windings		N/A
11.8	Temperature rise of the body of the motor, where in contact with insulating material, not exceeding values in table 3 for the relevant insulating material		N/A
16	Leakage current and electric strength		N/A
16.3	Insulation between live parts of the motor and its other metal parts not subjected to the test		N/A
19	Abnormal operation		N/A
19.1	The tests of 19.7 to 19.9 not carried out		N/A
19.101	Appliance operated at rated voltage with each of the following fault conditions:		N/A
	- short circuit of the terminals of the motor, including any capacitor incorporated in the motor circuit		N/A
	- short circuit of each diode of the rectifier		N/A
	- open circuit of the supply to the motor		N/A
	- open circuit of any parallel resistor, the motor being in operation		N/A
	Only one fault simulated at a time, the tests carried out consecutively		N/A
22	Construction		N/A
22.101	For class I appliances incorporating a motor supplied by a rectifier circuit, the d.c. circuit being insulated from accessible parts of the appliance by double or reinforced insulation		N/A
	Compliance checked by the tests specified for double and reinforced insulation		N/A

J	ANNEX J (NORMATIVE) COATED PRINTED CIRCUIT BOARDS		N/A
	Testing of protective coatings of printed circuit boards carried out in accordance with IEC 60664-3 with the following modifications:	No coated PCB.	N/A
6.6	Climatic sequence		N/A
	When production samples are used, three samples of the printed circuit board are tested		N/A
6.6.1	Cold		N/A

IEC 60335-2-80			
Clause	Requirement - Test	Result - Remark	Verdict
	The test is carried out at -25°C		N/A
6.6.3	Rapid change of temperature		N/A
	Severity 1 is specified		N/A
6.8.6	Partial discharge extinction voltage		N/A
	Type A coatings not subjected to a partial discharge test		N/A
6.9	Additional tests		N/A
	This subclause is not applicable		N/A

K	ANNEX K (NORMATIVE) OVERVOLTAGE CATEGORIES		P
	The information on overvoltage categories is extracted from IEC 60664-1		P
	Overvoltage category is a numeral defining a transient overvoltage condition		P
	Equipment of overvoltage category IV is for use at the origin of the installation		N/A
	Equipment of overvoltage category III is equipment in fixed installations and for cases where the reliability and the availability of the equipment is subject to special requirements		N/A
	Equipment of overvoltage category II is energy consuming equipment to be supplied from the fixed installation	According to the clause 29.1.	P
	If such equipment is subjected to special requirements with regard to reliability and availability, overvoltage category III applies		N/A
	Equipment of overvoltage category I is equipment for connection to circuits in which measures are taken to limit transient overvoltages to an appropriate low level		N/A

L	ANNEX L (INFORMATIVE) GUIDANCE FOR THE MEASUREMENT OF CLEARANCES AND CREEPAGE DISTANCES		P
	Sequences for the determination of clearances and creepage distances		P

M	ANNEX M (NORMATIVE) POLLUTION DEGREE		P
---	-----------------------------------------	--	---

IEC 60335-2-80			
Clause	Requirement - Test	Result - Remark	Verdict
	The information on pollution degrees is extracted from IEC 60664-1		P
	Pollution		P
	The microenvironment determines the effect of pollution on the insulation, taking into account the microenvironment		P
	Means may be provided to reduce pollution at the insulation by effective enclosures or similar		P
	Minimum clearances specified where pollution may be present in the microenvironment		P
	Degrees of pollution in the microenvironment		P
	For evaluating creepage distances, the following degrees of pollution in the microenvironment are established:		P
	- pollution degree 1: no pollution or only dry, non-conductive pollution occurs. The pollution has no influence		N/A
	- pollution degree 2: only non-conductive pollution occurs, except that occasionally a temporary conductivity caused by condensation is to be expected		N/A
	- pollution degree 3: conductive pollution occurs or dry non-conductive pollution occurs that becomes conductive due to condensation that is to be expected	According clause 29.2 of IEC 60335-2-80	P
	- pollution degree 4: the pollution generates persistent conductivity caused by conductive dust or by rain or snow		N/A

N	ANNEX N (NORMATIVE) PROOF TRACKING TEST		N/A
	The proof tracking test is carried out in accordance with IEC 60112 with the following modifications:		N/A
7	Test apparatus		N/A
7.3	Test solutions		N/A
	Test solution A is used		N/A
10	Determination of proof tracking index (PTI)		N/A
10.1	Procedure		N/A
	The proof voltage is 100V, 175V, 400V or 600V :		N/A
	The last paragraph of Clause 3 applies		N/A
	The test is carried out on five specimens		N/A

IEC 60335-2-80			
Clause	Requirement - Test	Result - Remark	Verdict
	In case of doubt, additional test with proof voltage reduced by 25V, the number of drops increased to 100		N/A
10.2	Report		N/A
	The report stating if the PTI value was based on a test using 100 drops with a test voltage of (PTI-25) V		N/A
O	ANNEX O (INFORMATIVE) SELECTION AND SEQUENCE OF THE TESTS OF CLAUSE 30		P
	Description of tests for determination of resistance to heat and fire		P
P	ANNEX P (INFORMATIVE) GUIDANCE FOR THE APPLICATION OF THIS STANDARD TO APPLIANCES USED IN WARM DAMP EQUABLE CLIMATES		N/A
	Modifications applicable for class 0 and 01 appliances having a rated voltage exceeding 150V, intended to be used in countries having a warm damp equable climate and that are marked WDaE		N/A
	Modifications may also be applied to class 1 appliances having a rated voltage exceeding 150V, intended to be used in countries having a warm damp equable climate and that are marked WDaE, if liable to be connected to a supply mains that excludes the protective earthing conductor		N/A
5	General conditions for the tests		N/A
5.7	The ambient temperature for the tests of Clauses 11 and 13 is 40 ⁺³ / ₀		N/A
7	Marking and instructions		N/A
7.1	The appliance marked with the letters WDaE		N/A
7.12	The instructions state that the appliance is to be supplied through a RCD having a rated residual operating current not exceeding 30 mA		N/A
	The instructions state that the appliance is considered to be suitable for use in countries having a warm damp equable climate, but may also be used in other countries		N/A
11	Heating		N/A
11.8	The values of Table 3 are reduced by 15 K		N/A
13	Leakage current and electric strength at operating temperature		N/A
13.2	The leakage current for class I appliances not exceeding 0,5 mA		N/A
15	Moisture resistance		N/A

IEC 60335-2-80			
Clause	Requirement - Test	Result - Remark	Verdict
15.3	The value of t is 37 °C		N/A
16	Leakage current and electric strength		N/A
16.2	The leakage current for class I appliances not exceeding 0,5 mA		N/A
19	Abnormal operation		N/A
19.13	The leakage current test of 16.2 is applied in addition to the electric strength test of 16.3		N/A

Q	ANNEX Q (INFORMATIVE) SEQUENCE OF TESTS FOR THE EVALUATION OF ELECTRONIC CIRCUITS		N/A
	Description of tests for appliances incorporating electronic circuits		N/A

R	ANNEX R (NORMATIVE) SOFTWARE EVALUATION		N/A
	Software evaluated in accordance with the following clauses of Annex H of IEC 60730-1, as modified		N/A
H.2	Definitions		N/A
	Only definitions H.2.16 to H.2.20 applicable		N/A
H.7	Information		N/A
	Only footnotes 12) to 18) of Table 7.2, as modified, applicable		N/A
H.11.12	Controls using software		N/A
	All the subclauses of H.11.12, as modified, except H.11.12.6 and H.11.12.6.1, applicable		N/A
H.11.12.7	Delete text		N/A
H.11.12.7.1	For appliances using software class C having a single channel with self-test and monitoring structure, the manufacturer provides the measures necessary to address the fault/errors in safety related segments and data		N/A
H.11.12.8	Software fault/error detection occurs before compliance with 19.13 of IEC 60335-1 is impaired		N/A
H.11.12.8.1	Replace text		N/A
H.11.12.13	Software and safety related hardware under its control initializes and terminates before compliance with 19.13 of IEC 60335-1 is impaired		N/A

IEC 60335-2-80			
Clause	Requirement - Test	Result - Remark	Verdict

EU differences

6	CLASSIFICATION		P
6.1	Protection against electric shock: Class I, II, III	Class I	P

7	MARKING AND INSTRUCTIONS		P
7.1	Rated voltage or voltage range (V).....	230 V	P
	Single-phase appliances: 230 V covered	Covered, see previous line.	P
	Multi-phase appliances: 400 V covered		N/A

25	SUPPLY CONNECTION AND EXTERNAL FLEXIBLE CORDS		N/A
25.6	Plugs fitted with only one flexible cord	No power supply cord provided.	N/A
	Supply cords of single-phase portable appliances having a rated current not exceeding 16 A shall be fitted with a plug complying with the following standard sheets of IEC 60083:1975:		N/A
	- for Class I appliances: Standard Sheet C2b, C3B or C4;		N/A
	- for Class II appliances: Standard Sheet C5 or C6		N/A
25.7	Supply cord not lighter than:		N/A
	- ordinary polychloroprene sheathed flexible cord (code designation 60245 IEC 57)		N/A
	When supply cords having high flexibility are used, they shall not be lighter than		N/A
	- rubber insulated and sheathed cord (code designation 60245 IEC 86);		N/A
	- rubber insulated, crosslinked PVC sheathed cord (code designation 60245 IEC 87);		N/A
	- crosslinked PVC insulated and sheathed cord (code designation 60245 IEC 88).		N/A

ANNEX EMF			
	The Tested product also complies to the requirements of EN 50366:2003 + A1:2006		—
	Limit 100%	Measured max. : 2,149	P

IEC 60335-2-80			
Clause	Requirement - Test	Result - Remark	Verdict

10.1	TABLE: Power input deviation				P
Input deviation of/at:	P rated (W)	P measured (W)	Dp (W)	Required dP (W)	Remark
	300	274	- 26	+ 60	

10.2	TABLE: Current deviation				N/A
Current deviation of/at:	I rated (A)	I measured (A)	dI	Required dI	Remark
-					

11.8	TABLE: Heating test, thermocouples		P
	Test voltage (V).....:	243,8	—
	Ambient (°C).....:	50	—
Thermocouple locations		ΔT (K)	Max. ΔT (K)
Terminal block		1	35
Supply cord of the motor		2	25
Surface of switch		1	5
Enclosure of terminal		2	according to clause 30.1
Enclosure of motor		15	according to clause 30.1

Note(s):

With a rated maximum ambient temperature of 50°C, the max. temperature rise is calculated as follows:

Winding components:

- Class 130 (resistance method) $\rightarrow \Delta T_{max} = 95K - (50-25) K = 70 K$

Surface of components:

- Terminal block $\rightarrow \Delta T_{max} = 60 - (50-25) K = 35 K$

- Internal wire $\rightarrow \Delta T_{max} = 50 - (50-25) K = 25 K$

- Switch $\rightarrow \Delta T_{max} = 30 - (50-25) K = 5 K$

IEC 60335-2-80			
Clause	Requirement - Test	Result - Remark	Verdict

11.8		TABLE: Heating test, resistance method				P
	Test voltage (V).....	243,8				—
	Ambient, t ₁ (°C).....	50				—
	Ambient, t ₂ (°C).....	50				—
Temperature rise of winding	R ₁ (Ω)	R ₂ (Ω)	dT (K)	Max. dT (K)	Insulation class	
main + auxiliary winding (fan I)	187	219	49	70	130	
main + auxiliary winding (fan II)	229	279	62	70	130	

13.2		TABLE: Leakage current		P
	Heating appliances: 1.15 x rated input.....	-		—
	Motor-operated and combined appliances: 1.06 x rated voltage	243,8 V		—
		I (mA)	Max. allowed I (mA)	
Leakage current between:				
Live and touchable plastic enclosure wrapped with foil:		0,1	0,25	
Live and metal part:		0,15	3,5	

13.3		TABLE: Electric strength		P
Test voltage applied between:		Voltage (V)	Breakdown (Yes/No)	
Live and metal part		1000	No	
Both of the sides of touchable plastic enclosure wrapped with foil		1750	No	

14		TABLE: Transient overvoltages				N
Clearance between:	CI (mm)	Required CI (mm)	Rated impulse voltage (V)	Impulse test voltage (V)	Flashover (Yes/No)	
-						

16.2		TABLE: Leakage current		P
	Single phase appliances: 1.06 x rated voltage.....	243,8 V		—
	Three phase appliances 1.06 x rated voltage divided by √3:	-		—
Leakage current between:		I (mA)	Max. allowed I (mA)	

IEC 60335-2-80			
Clause	Requirement - Test	Result - Remark	Verdict
	Live and touchable plastic enclosure wrapped with foil:	0,1	0.25
	Live and metal part:	0,16	3,5

16.3	TABLE: Electric strength			P
Test voltage applied between:		Voltage (V)	Breakdown (Yes/No)	
Live and metal part		1250	No	
Both of the sides touchable of plastic enclosure wrapped with foil		1750	No	

17	TABLE: Overload protection, temperature rise			N/A
Temperature rise of part/at:		dT (K)	Max. dT (K)	
-				

19.7	TABLE: Abnormal operation, locked rotor/moving parts					P
	Test voltage (V).....:	230 V				—
	Ambient, t ₁ (°C).....:	23 °C				—
	Ambient, t ₂ (°C).....:	23 °C				—
Temperature of winding		R ₁ (Ω)	R ₂ (Ω)	dT (K)	T (°C)	Max. T (°C)
main + auxiliary winding (fan I)		166	220	84	106	225
main + auxiliary winding (fan II)		205	281	95	118	225

19.9	TABLE: Abnormal operation, running overload					N/A
	Test voltage (V).....:	-				—
	Ambient, t ₁ (°C).....:	-				—
	Ambient, t ₂ (°C).....:	-				—
Temperature of winding		R ₁ (Ω)	R ₂ (Ω)	dT (K)	T (°C)	Max. T (°C)
-						

19.13	TABLE: Abnormal operation, temperature rises			P
Thermocouple locations		dT (K)	Max. dT (K)	
enclosure (class II part)		2	according to clause 30.1	
enclosure (fan)		48	according to clause 30.1	

IEC 60335-2-80					
Clause	Requirement - Test			Result - Remark	Verdict
24.1	TABLE: Components				P
VENTS VUT H					
Object / part No.	Manufacturer/ trademark	Type / model	Technical data	Standard	Mark(s) of conformity
VENTS VUT 350 H					
Engine of fan	ebm PAPST	D2E 140-HR 97-07	230 V~ 130 W B 50/60 HZ	IEC 60335	Tested in the equipment**
VENTS VUT 500 H; VENTS VUT 530 H					
Engine of fan	ebm PAPST	D2E146-HR 97-07	230V~ 50/60Hz 0,66/0,73 A 150/160W, B	IEC 60335	Tested in the equipment
VENTS VUT 600 H					
Engine of fan	ebm PAPST	D2E146-HS 9703	230V~ 50/60Hz 0,86/0,94 A 195/215 W; B	IEC 60335	Tested in the equipment**
All type					
Motor protector	Thermik	SP1 (as part of the fan)	130 °C	IEC 60335	Tested in the equipment
Capacitor (engine of fan)	Conis	MKPZ	4 µF 400 Vac	EN 60335	Tested in the equipment
Thermostat	Wuxi Huishan Automatic Controller Co., Ltd.	F3000 1,5m	16(4) A 230 Vac (-30 — +30°C)	EN 60335	Tested in the equipment
Terminal	SIMET SA	LTA12	400 V; T 85	EN 60998	BBJ*
Relay	relpol	R4-2014-23	6 A; 250 V	IEC 61810-1	VDE*
Circuit breaker	ИЭК	BA-47-29M	230/400 V	EN 60335	Tested in the equipment
Switch	PINYI	KCD8-211N	250 Vac; 15 A	IEC 947	CQC*
Switch	LEGRAND	7759-58	AC220-240 V, 0,05-1,5A	EN 60335	Tested in the equipment
*) An asterisk indicates a mark which assures the agreed level of surveillance **) The structures of engines are basically same as the engine of unit type VENTS VUT 500 H					

28.1	TABLE: Threaded part torque test			P
Threaded part identification	Diameter of thread (mm)	Column number (I, II, or III)	Applied torque (Nm)	
cover of terminal block	2,9	II	0,5	

IEC 60335-2-80			
Clause	Requirement - Test	Result - Remark	Verdict

29.1	TABLE: Clearances						P
	Overvoltage category.....:	II					P
		Type of insulation:					
Rated impulse voltage (V):	Min. cl (mm)	Basic	Functional	Supplementary	Reinforced	Verdict / Remark	
330	0,5					N/A	
500	0,5					N/A	
800	0,5					N/A	
1 500	1,0					N/A	
2 500	2,0	>2,1		> 2,6		P	
4 000	3,5					N/A	
6 000	6,0					N/A	
8 000	8,5					N/A	
10 000	11,5					N/A	

29.2	TABLE: Creepage distances, basic, supplementary and reinforced insulation										P
Working voltage (V)	Creepage distance (mm)										Verdict
	Pollution degree							Type of insulation			
	1	2			3						
		Material group			Material group						
		I	II	IIIa/IIIb	I	II	IIIa/IIIb	B [*])	S [*])	R [*])	
≤50	0,2	0,6	0,9	1,2	1,5	1,7	1,9		—	—	N/A
≤50	0,2	0,6	0,9	1,2	1,5	1,7	1,9	—		—	N/A
≤50	0,4	1,2	1,8	2,4	3,0	3,4	3,8	—	—		N/A
>50 and ≤125	0,3	0,8	1,1	1,5	1,9	2,1	2,4		—	—	N/A
>50 and ≤125	0,3	0,8	1,1	1,5	1,9	2,1	2,4	—		—	N/A
>50 and ≤125	0,6	1,6	2,2	3,0	3,8	4,2	4,8	—	—		N/A
>125 and ≤250	0,6	1,3	1,8	2,5	3,2	3,6	4,0	>3	—	—	P ⁽¹⁾
>125 and ≤250	0,6	1,3	1,8	2,5	3,2	3,6	4,0	—	>3	—	P ⁽²⁾

IEC 60335-2-80											
Clause	Requirement - Test								Result - Remark		Verdict
>250 and ≤400	1,0	2,0	2,8	4,0	5,0	5,6	6,3		—	—	N/A
>250 and ≤400	1,0	2,0	2,8	4,0	5,0	5,6	6,3	—		—	N/A
>250 and ≤400	2,0	4,0	5,6	8,0	10,0	11,2	12,6	—	—		N/A
>400 and ≤500	1,3	2,5	3,6	5,0	6,3	7,1	8,0		—	—	N/A
>400 and ≤500	1,3	2,5	3,6	5,0	6,3	7,1	8,0	—		—	N/A
>400 and ≤500	2,6	5,0	7,2	10,0	12,6	14,2	16,0	—	—		N/A
>500 and ≤800	1,8	3,2	4,5	6,3	8,0	9,0	10,0		—	—	N/A
>500 and ≤800	1,8	3,2	4,5	6,3	8,0	9,0	10,0	—		—	N/A
>500 and ≤800	3,6	6,4	9,0	12,6	16,0	18,0	20,0	—	—		N/A
>800 and ≤1000	2,4	4,0	5,6	8,0	10,0	11,0	12,5		—	—	N/A
>800 and ≤1000	2,4	4,0	5,6	8,0	10,0	11,0	12,5	—		—	N/A
>800 and ≤1000	4,8	8,0	11,2	16,0	20,0	22,0	25,0	—	—		N/A
>1000 and ≤1250	3,2	5,0	7,1	10,0	12,5	14,0	16,0		—	—	N/A
>1000 and ≤1250	3,2	5,0	7,1	10,0	12,5	14,0	16,0	—		—	N/A
>1000 and ≤1250	6,4	10,0	14,2	20,0	25,0	28,0	32,0	—	—		N/A
>1250 and ≤1600	4,2	6,3	9,0	12,5	16,0	18,0	20,0		—	—	N/A
>1250 and ≤1600	4,2	6,3	9,0	12,5	16,0	18,0	20,0	—		—	N/A
>1250 and ≤1600	8,4	12,6	18,0	25,0	32,0	36,0	40,0	—	—		N/A
>1600 and ≤2000	5,6	8,0	11,0	16,0	20,0	22,0	25,0		—	—	N/A
>1600 and ≤2000	5,6	8,0	11,0	16,0	20,0	22,0	25,0	—		—	N/A
>1600 and ≤2000	11,2	16,0	22,0	32,0	40,0	44,0	50,0	—	—		N/A
>2000 and ≤2500	7,5	10,0	14,0	20,0	25,0	28,0	32,0		—	—	N/A
>2000 and ≤2500	7,5	10,0	14,0	20,0	25,0	28,0	32,0	—		—	N/A
>2000 and ≤2500	15,0	20,0	28,0	40,0	50,0	56,0	64,0	—	—		N/A
>2500 and ≤3200	10,0	12,5	18,0	25,0	32,0	36,0	40,0		—	—	N/A
>2500 and ≤3200	10,0	12,5	18,0	25,0	32,0	36,0	40,0	—		—	N/A
>2500 and ≤3200	20,0	25,0	36,0	50,0	64,0	72,0	80,0	—	—		N/A
>3200 and ≤4000	12,5	16,0	22,0	32,0	40,0	45,0	50,0		—	—	N/A
>3200 and ≤4000	12,5	16,0	22,0	32,0	40,0	45,0	50,0	—		—	N/A
>3200 and ≤4000	25,0	32,0	44,0	64,0	80,0	90,0	100,0	—	—		N/A
>4000 and ≤5000	16,0	20,0	28,0	40,0	50,0	56,0	63,0		—	—	N/A

IEC 60335-2-80												
Clause	Requirement - Test								Result - Remark			Verdict
>4000 and ≤5000	16,0	20,0	28,0	40,0	50,0	56,0	63,0	—	—	—	N/A	
>4000 and ≤5000	32,0	40,0	56,0	80,0	100,0	112,0	126,0	—	—	—	N/A	
>5000 and ≤6300	20,0	25,0	36,0	50,0	63,0	71,0	80,0	—	—	—	N/A	
>5000 and ≤6300	20,0	25,0	36,0	50,0	63,0	71,0	80,0	—	—	—	N/A	
>5000 and ≤6300	40,0	50,0	72,0	100,0	126,0	142,0	160,0	—	—	—	N/A	
>6300 and ≤8000	25,0	32,0	45,0	63,0	80,0	90,0	100,0	—	—	—	N/A	
>6300 and ≤8000	25,0	32,0	45,0	63,0	80,0	90,0	100,0	—	—	—	N/A	
>6300 and ≤8000	50,0	64,0	90,0	126,0	160,0	180,0	200,0	—	—	—	N/A	
>8000 and ≤10000	32,0	40,0	56,0	80,0	100,0	110,0	125,0	—	—	—	N/A	
>8000 and ≤10000	32,0	40,0	56,0	80,0	100,0	110,0	125,0	—	—	—	N/A	
>8000 and ≤10000	64,0	80,0	112,0	160,0	200,0	220,0	250,0	—	—	—	N/A	
>10000 and ≤12500	40,0	50,0	71,0	100,0	125,0	140,0	160,0	—	—	—	N/A	
>10000 and ≤12500	40,0	50,0	71,0	100,0	125,0	140,0	160,0	—	—	—	N/A	
>10000 and ≤12500	80,0	100,0	142,0	200,0	250,0	280,0	320,0	—	—	—	N/A	

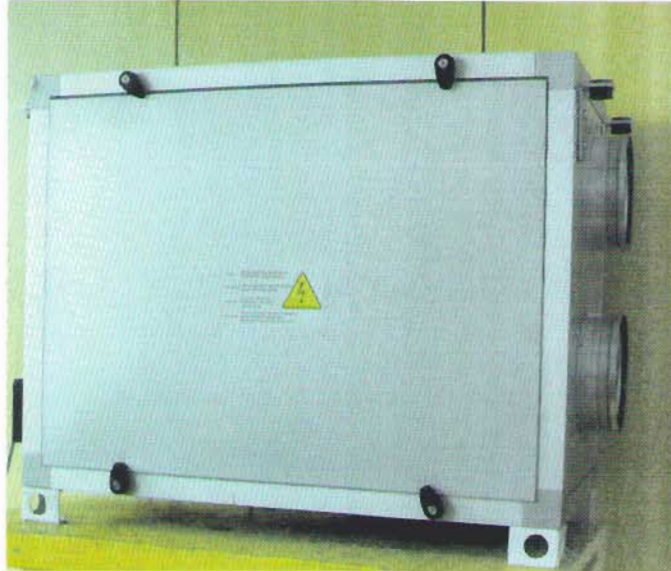
*) B=Basic, S=Supplementary and R=Reinforced
 (1): Between live and metal surface
 (2): between the sides of plastic enclosure

29.2	TABLE: Creepage distances, functional insulation								P
Working voltage (V)	Creepage distance (mm)							Verdict / Remark	
	Pollution degree								
	1	2			3				
		Material group			Material group				
		I	II	IIIa/IIIb	I	II	IIIa/IIIb		
≤50	0,2	0,6	0,8	1,1	1,4	1,6	1,8	N/A	
>50 and ≤125	0,3	0,7	1,0	1,4	1,8	2,0	2,2	N/A	
>125 and ≤250	0,4	1,0	1,4	2,0	2,5	2,8	3,2	P	
>250 and ≤400	0,8	1,6	2,2	3,2	4,0	4,5	5,0	N/A	
>400 and ≤500	1,0	2,0	2,8	4,0	5,0	5,6	6,3	N/A	
>500 and ≤800	1,8	3,2	4,5	6,3	8,0	9,0	10,0	N/A	
>800 and ≤1000	2,4	4,0	5,6	8,0	10,0	11,0	12,5	N/A	
>1000 and ≤1250	3,2	5,0	7,1	10,0	12,5	14,0	16,0	N/A	

IEC 60335-2-80									
Clause	Requirement - Test							Result - Remark	Verdict
>1250 and ≤1600	4,2	6,3	9,0	12,5	16,0	18,0	20,0	N/A	
>1600 and ≤2000	5,6	8,0	11,0	16,0	20,0	22,0	25,0	N/A	
>2000 and ≤2500	7,5	10,0	14,0	20,0	25,0	28,0	32,0	N/A	
>2500 and ≤3200	10,0	12,5	18,0	25,0	32,0	36,0	40,0	N/A	
>3200 and ≤4000	12,5	16,0	22,0	32,0	40,0	45,0	50,0	N/A	
>4000 and ≤5000	16,0	20,0	28,0	40,0	50,0	56,0	63,0	N/A	
>5000 and ≤6300	20,0	25,0	36,0	50,0	63,0	71,0	80,0	N/A	
>6300 and ≤8000	25,0	32,0	45,0	63,0	80,0	90,0	100,0	N/A	
>8000 and ≤10000	32,0	40,0	56,0	80,0	100,0	110,0	125,0	N/A	
>10000 and ≤12500	40,0	50,0	71,0	100,0	125,0	140,0	160,0	N/A	

30.1	TABLE: Ball pressure			P
Part	Test temperature (°C)	Impression diameter (mm)	Allowed impression diameter (mm)	
Enclosure	75	1,3	2	
Part of control switch	125	1,6	2	

Pictures of the appliances



VENTS VUT 500 H

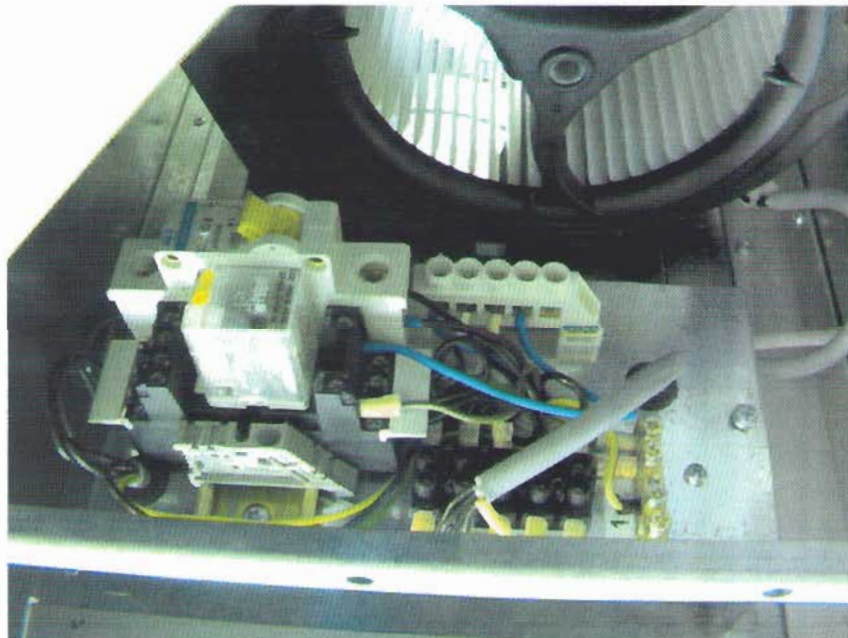


VENTS VUT 500 H

Pictures of the appliances



VENTS VUT 500 H



VENTS VUT 500 H

Attachment 1

IEC/EN 60335-1/A2			
Clause	Requirement + Test	Result - Remark	Verdict
5	GENERAL CONDITIONS FOR THE TESTS		
	Tests performed according to cl. 5, e.g. nature of supply, sequence of testing, etc. The test of 19.14 is carried out before the tests of 19.11.		P
7	MARKING AND INSTRUCTIONS		
7.5	The power input is related to the arithmetic mean value of the rated voltage range		P
7.6	Correct symbols used		N/A
7.12	Instructions for safe use provided		P
	The instructions state that:		
	- the appliance is not to be used by children or persons with reduced physical, sensory or mental capabilities, or lack of experience and knowledge, unless they have been given supervision or instruction		P
8	PROTECTION AGAINST ACCESS TO LIVE PARTS		
8.1.1	"Without appreciable force" is considered to be a force not exceeding 1N (Note 2)		P
8.1.2	"Without appreciable force" is considered to be a force not exceeding 1N (Note 2)		P
8.1.3	"Without appreciable force" is considered to be a force not exceeding 1N (Note1)		N/A
8.1.4	- for peak values over 15kV, the energy in the discharge not exceeding 350 mJ		N/A
8.2	Note 1 does not apply		P
	Note: Built-in appliances and fixed appliances are tested after installation.		P
10	POWER INPUT AND CURRENT		
10.1	The permissible deviations apply for both limits of the range for appliances marked with a rated voltage range having limits differing by more than 10 % of the arithmetic mean value of the range.		N/A
	Note 1 and 2 do not apply		P
10.2	The permissible deviations apply for both limits of the range for appliances marked with a rated voltage range having limits differing by more than 10 % of the arithmetic mean value of the range.		N/A
	Test for an appliance with one or more rated voltage ranges		N/A

Attachment 1

IEC/EN 60335-1/A2			
Clause	Requirement + Test	Result - Remark	Verdict
11	HEATING		
	Table 3: First entry: Replace the terms "class A, class B, class F and class H" by the terms "class 105, class 120, class 130, class 155 and class 180"		P
	Table 3: Fifth entry: Rubber, polychloroprene or polyvinyl chloride insulation of internal and external wiring, including supply cords: without temperature rating or with a temperature rating not exceeding 75 °C with temperature rating (T) where T exceeds 75 °C		P
	Footnote: The temperature rise limit of windings in transformers and inductors mounted on printed circuit boards is equal to the thermal class of the winding insulation reduced by 25 K provided the largest dimension of the winding does not exceed 5 mm in cross section or length.		N/A
	j: IEC 60245 Types 53, 57 and 87 supply cords have a T rating of 60 °C; IEC 60227 Types 52 and 53 supply cords have a T rating of 70 °C; IEC 60227 Types 56 and 57 supply cords have a T rating of 90 °C.		N/A
14	TRANSIENT OVERVOLTAGES		
	The impulse test voltage has a no-load wave shape corresponding to the 1,2/50 µs standard impulse specified in IEC 61180-1. It is supplied from a generator having conventional impedance not exceeding 42 Ω. The impulse test voltage is applied three times for each polarity with intervals of at least 1 s.		N/A

Attachment 1

IEC/EN 60335-1/A2			
Clause	Requirement + Test	Result - Remark	Verdict
16	LEAKAGE CURRENT AND ELECTRIC STRENGTH		
16.3	Electric strength tests according to table 7 (accordance with IEC 61180-1)	(See appended table)	P
	Note 2: The characteristics of the high-voltage source used for the test are described in Table 5.		P
	Delete the penultimate paragraph of the test specification.		P
19	ABNORMAL OPERATION		
19.1	Appliances incorporating contactors or relays subjected to the test of 19.14.		N/A
19.7	In the second paragraph, replace "IEC 60252" by "IEC 60252-1".		N/A
19.11	Replace the second and third paragraphs by the following: Appliances incorporating an electronic circuit are subjected to the tests of 19.11.3 and 19.11.4.	Corrigendum 1:2006	P
	Appliances incorporating an electronic circuit that relies upon a programmable component to function correctly, subjected to the test of 19.11.4.8		N/A
	In the existing third paragraph, replace "switch" by "device" in two places.		P
	In the sixth paragraph replace "all three" by "both" and delete the last dashed item.		N/A
19.11.2	g) failure of an electronic power switching device in a partial turn-on mode with loss of gate (base) control. During this test, winding temperatures shall not exceed the values given in 19.7.		N/A
19.11.4	In the first paragraph, replace "switch" by "device" in three places.		N/A

Attachment 1

IEC/EN 60335-1/A2			
Clause	Requirement + Test	Result - Remark	Verdict
	In the last paragraph, replace "arresters" by "protective devices".		N/A
19.11.4.6	The appliance is subjected to the Class 3 voltage dips and interruptions in accordance with IEC 61000-4-11		N/A
19.11.4.8	The appliance is supplied at rated voltage and operated under normal operation. After 60s the power supply is reduced to a level such that the appliance ceases to respond or a programmable component cease to operate.		N/A
	The appliance continues to operate normally or requires a manual operation to restart		N/A
19.13	After the tests, and when the appliance has cooled to approximately room temperature, compliance with Clause 8 shall not be impaired and the appliance shall comply with 20.2 if it can still be operated.		P
	After operation or interruption of a control, clearances and creepage distances across the functional insulation withstanding the electric strength test of 16.3. the test voltage being twice the working voltage		P
	Appliances tested with an electronic switch in the off position, or in the stand-by mode:		
	- do not become operational, or		N/A
	- if they become operational, do not result in a dangerous malfunction during or after the tests of 19.11.4		N/A
	Note: Unintended operation that may impair safety can result from careless use of appliances, such as:		
	- storage of small appliances while connected to the supply;		N/A
	- placing flammable material on working surfaces of heating appliances; or		N/A
	- placing objects in areas near motorized appliances that are not expected to start.		N/A
19.14	Appliances operated under the conditions of Clause 11. Contactors or relays contacts operating under the conditions of clause 11 short-circuited		N/A

Attachment 1

IEC/EN 60335-1/A2			
Clause	Requirement + Test	Result - Remark	Verdict
22	CONSTRUCTION		
22.2	Single-pole switches and single-pole protective devices for the disconnection of heating elements in single-phase, permanently connected class 0I and class I appliances, connected to the phase conductor		N/A
22.5	No risk of electric shock from charged capacitors having a rated capacitance exceeding 0,1 µF when touching the pins of the plug, the appliance being disconnected from the supply at the instant of voltage peak		N/A
	Delete the note		N/A
22.21	This requirement does not apply to magnesium oxide and mineral ceramic fibres used for the electrical insulation of heating elements.		N/A
	Delete note 2		N/A
22.32	Insulating material in which heating conductors are embedded is considered to be basic insulation and not reinforced insulation .		N/A
	Delete Note 1 and renumber existing Note 2 as Note		N/A
22.35	Instead of first paragraph: actuated in normal use shall not become live in the event of a failure of basic insulation . If these handles, levers and knobs are of metal and if their shafts or fixings are likely to become live in the event of a failure of basic insulation , they shall be adequately covered by insulating material or their accessible parts shall be separated from their shafts or fixings by supplementary insulation .		N/A
22.40	Unless the appliance can operate continuously, automatically or remotely without giving rise to a hazard, appliances for remote operation being fitted with a switch. The actuating member of the switch being easily visible and accessible.		N/A
22.44	Appliances shall not have an enclosure that is shaped or decorated like a toy		P
22.49	For remote operation, the duration of operation shall be set before the appliance can be started, unless the appliance switches off automatically or can operate continuously without hazard		N/A
22.50	Controls incorporated in the appliance take priority over controls actuated by remote operation.		N/A

Attachment 1

IEC/EN 60335-1/A2			
Clause	Requirement + Test	Result - Remark	Verdict
22.51	<p>A control on the appliance shall be manually adjusted to the setting for remote operation before the appliance can be operated in this mode. There shall be a visual indication on the appliance showing that the appliance is adjusted for remote operation. The manual setting and the visual indication of the remote mode are not necessary on appliances that can</p> <ul style="list-style-type: none"> - operate continuously, or - operate automatically, or - be operated remotely, <p>without giving rise to a hazard.</p>		N/A
22.52	<p>Socket-outlets on appliances accessible to the user in accordance with the socket-outlet system used in the country in which the appliance is sold.</p>		N/A
24	COMPONENTS		
24.1	<p>NOTE 1: Compliance with the IEC standard for the relevant component does not necessarily ensure compliance with the requirements of this standard.</p>		P
	<p>NOTE 2: Motors are not required to comply with IEC 60034-1.</p>		P
	<p>NOTE 3: Unless otherwise specified, the requirements of Clause 29 of this standard apply between live parts of components and accessible parts of the appliance.</p>		P
	<p>NOTE 4: Unless otherwise specified, the requirements of 30.2 of this standard apply to parts of non-metallic material in components including parts of non-metallic material supporting current-carrying connections inside components.</p>		P
	<p>Components that have been previously tested and shown to comply with the resistance to fire requirements in the IEC standard for the relevant component need not be retested provided that</p> <ul style="list-style-type: none"> – the severity specified in the component standard is not less than the severity specified in 30.2 of this standard and – unless the preselection alternative is used, the test report for the component states whether it complied IEC standard for the relevant component with or without flame. Flames existing for a cumulative time not exceeding 2 s during the test are ignored. 		N/A

Attachment 1

IEC/EN 60335-1/A2			
Clause	Requirement + Test	Result - Remark	Verdict
	If the above two conditions are not satisfied, the component is tested as part of the appliance.		N/A
	There are two levels of severity specified for appliances for which 30.2.3 is applicable.		N/A
	Components that have not been previously tested and shown to comply with the IEC standard for the relevant component are tested according to the requirements of 30.2 of this standard.		P
	In the first paragraph of the test specification, replace "24.1.1 to 24.1.6" by "24.1.1 to 24.1.9".		P
	Renumber Note 2 as Note 5.		P
	Lampholders and starterholders not being tested and found to comply with the relevant IEC standard, tested as a part of the appliance and additionally according to the gauging and interchangeability requirements of the relevant IEC standard.		N/A
	NOTE 6: Where the relevant IEC standard specifies these gauging and interchangeability requirements at elevated temperatures, the temperatures measured during the tests of Clause 11 are used.		N/A
24.1.7	If the remote operation of the appliance is via a telecommunication network, the relevant standard for the telecommunication interface circuitry in the appliance is IEC 62151.		N/A
24.1.8	The relevant standard for thermal links is IEC 60691. Thermal links not complying with IEC 60691 are considered to be an intentionally weak part for the purposes of Clause 19		N/A
24.1.9	Relays, other than motor starting relays, are tested as part of the appliance. However, they are also tested in accordance with Clause 17 of IEC 60730-1 under the maximum load conditions occurring in the appliance for at least the number of operations in 24.1.4 selected according to the relay function in the appliance.		N/A
25	SUPPLY CONNECTION AND EXTERNAL FLEXIBLE CORDS		
25.7	Supply cords being one of the following types:		
	- rubber sheathed (at least 60245 IEC 53)		N/A

Attachment 1

IEC/EN 60335-1/A2									
Clause	Requirement + Test	Result - Remark	Verdict						
	- polychloroprene sheathed (at least 60245 IEC 57)		N/A						
	- cross-linked polyvinyl chloride sheathed (at least 60245 IEC 87)		N/A						
	Polyvinyl chloride sheathed: Not used if they are likely to touch metal parts having a temperature rise exceeding 75K during the test of Clause 11.		N/A						
	- light polyvinyl chloride sheathed cord (at least 60227 IEC 52), appliances not exceeding 3 kg		N/A						
	- ordinary polyvinyl chloride sheathed cord (at least 60227 IEC 53), other appliances		N/A						
	Heat resistant polyvinyl chloride sheathed: Not used for type X attachment other than specially prepared cords.		N/A						
	- Heat-resistant light polyvinyl chloride sheathed cord (at least 60227 IEC 56), appliances not exceeding 3 kg		N/A						
	- heat-resistant polyvinyl chloride sheathed cord (60227 IEC 57), other appliances		N/A						
26	TERMINALS FOR EXTERNAL CONDUCTORS								
26.2	NOTE: Conductors connected by soldering are not considered to be positioned or fixed so that reliance is not placed upon the soldering alone to maintain it in position unless they are held in place near the terminals independently of the solder.		N/A						
	In Table 13, replace the last two rows by the following: <table border="0" style="margin-left: 20px;"> <tr> <td>>32 and ≤50</td> <td>6 and 10</td> <td>6 to 16</td> </tr> <tr> <td>>50 and ≤63</td> <td>10 and 16</td> <td>10 to 25</td> </tr> </table>	>32 and ≤50	6 and 10	6 to 16	>50 and ≤63	10 and 16	10 to 25		N/A
>32 and ≤50	6 and 10	6 to 16							
>50 and ≤63	10 and 16	10 to 25							
26.3	Compliance checked by inspection and by the test of subclause 9.6 of IEC 60999-1.		P						
26.11	Replace Notes 1 and 2 by the following: NOTE: Conductors connected by soldering are not considered to be positioned or fixed so that reliance is not placed upon the soldering alone to maintain it in position unless they are held in place near the terminals independently of the solder.		N/A						

Attachment 1

IEC/EN 60335-1/A2			
Clause	Requirement + Test	Result - Remark	Verdict
27	PROVISION FOR EARTHING		
27.6	The printed conductors of printed circuit boards shall not be used to provide earthing continuity in hand-held appliances. They may be used to provide earthing continuity in other appliances if at least two tracks are used with independent soldering points and the appliance complies with 27.5 for each circuit		N/A
28	SCREWS AND CONNECTIONS		
	Replace the penultimate row of Table 14 by the following: >4,7 and ≤ 5,3 0,8 2,0 1,0		N/A
28.3	Thread-cutting (self-tapping) screws and thread rolling screws shall only be used for electrical connections if they generate a full form standard machine screw thread. However, thread-cutting (self-tapping) screws shall not be used if they are likely to be operated by the user or installer.		N/A
	Thread-cutting, thread rolling and space-threaded screws may be used in connections providing earthing continuity provided it is not necessary to disturb the connection – in normal use, – during user maintenance, – when replacing a supply cord having a type X attachment, or – during installation.		N/A
	At least two screws must be used for each connection providing earthing continuity unless the screw forms a thread having a length of at least half the diameter of the screw.		N/A
29	CLEARANCES, CREEPAGE DISTANCES AND SOLID INSULATION		
	If coatings are used on printed circuit boards to protect the microenvironment (Type 1 coating) or to provide basic insulation (Type 2 coating), Annex J applies. The microenvironment is pollution degree 1 under Type 1 coating. There are no clearance or creepage distance requirements under Type 2 coating.		N/A
29.1	In Note 2, replace "suppression" by "protective".		N/A

Attachment 1

IEC/EN 60335-1/A2			
Clause	Requirement + Test	Result - Remark	Verdict
	NOTE 6: For appliances intended for use at altitudes exceeding 2 000 m, the altitude correction factors for clearances specified in Table A.2 of IEC 60664-1 should be taken into account.		N/A
29.1.1	The values of Table 16, or the impulse voltage test of Clause 14, are applicable.		P
29.2	NOTE 1 The working voltage for parts connected to the neutral is the same as for parts connected to the phase and this is the working voltage for basic insulation. Add the following new note:		N/A
	NOTE 6 In a double insulation system, the working voltage for both the basic insulation and supplementary insulation is taken as the working voltage across the complete double insulation system. It is not divided according to thickness and dielectric constant of the basic insulation and supplementary insulation.		N/A
30	RESISTANCE TO HEAT AND FIRE		
30.2	Parts of non-metallic material adequately resistant to ignition and spread of fire.		P
	This requirement does not apply to decorative trims, knobs and other parts unlikely to be ignited or to propagate flames that originate inside the appliance.		N/A
	Compliance checked by the test of 30.2.1. In addition: - attended appliances, 30.2.2 applies - unattended appliances, 30.2.3 applies		P
	Appliances for remote operation, 30.2.3 applies.		N/A
	Base material of printed circuit board, 30.2.4 applies.		N/A
	The tests are carried out on parts of non-metallic material that have been removed from the appliance. When the glow-wire test is carried out, the parts are placed in the same orientation, as they would be in normal use.		P

Attachment 1

IEC/EN 60335-1/A2			
Clause	Requirement + Test	Result - Remark	Verdict
30.2.1	Glow-wire test of IEC 60695-2-11 at 550 °C, unless the material is classified at least HB40 according to IEC 60695-11-10		P
	Parts for which the glow-wire test cannot be carried out meet the requirements in ISO9772 for category HBF material		N/A
30.2.2	Appliances operated while attended, parts of non-metallic material supporting current-carrying connections, and parts of non-metallic material within a distance of 3mm of such connections, are subjected to the glow-wire test of IEC 60695-2-11.		N/A
	The glow-wire test is not carried out on parts of material classified as having a glow-wire flammability index according to IEC 60695-2-12 of at least:		N/A
	-750 °C, for connections carrying a current exceeding 0,5 A during normal operation		N/A
	-650 °C, for other connections		N/A
	Test as specified for an interposed shielding material		N/A
	When the glow-wire test of IEC 60695-2-11 is carried out, the temperatures are:		N/A
	-750 °C, for connections carrying a current exceeding 0,5 A during normal operation		N/A
	-650 °C, for other connections		N/A
	Test not applicable to conditions as specified		N/A
30.2.3	Appliances operated while unattended, tested as specified in 30.2.3.1 and 30.2.3.2		P
	Tests not applicable to conditions as specified		P
30.2.3.1	Parts of non-metallic material supporting connections that carry a current exceeding 0,2 A during normal operation, and parts of non-metallic material within a distance of 3 mm of such connections, are subjected to the glow-wire test of IEC 60695-2-11 with a test severity of 850 °C. However, the glow-wire test is not carried out on parts of material classified as having a glow-wire flammability index of at least 850 °C according to IEC 60695-2-12. If the glow-wire flammability index is not available for a sample with a thickness within ± 0,1 mm of the relevant part, then the test sample shall have a thickness equal to the nearest preferred value specified in IEC 60695-2-12 that is no thicker than the relevant part.		P

Attachment 1

IEC/EN 60335-1/A2			
Clause	Requirement + Test	Result - Remark	Verdict
	NOTE 1 The preferred values in IEC 60695-2-12 are 0,75 mm ± 0,1 mm, 1,5 mm ± 0,1 mm and 3,0 mm ± 0,2 mm.		N/A
	NOTE 2 Contacts in components such as switch contacts are considered to be connections.		N/A
	NOTE 3 The tip of the glow-wire is applied to the part in the vicinity of the connection.		P
	The glow-wire test is also not carried out on small parts that comply with the needle-flame test of Annex E or on small parts of material classified as V-0 or V-1 according to IEC 60695-11-10 provided that the test sample used for the classification was no thicker than the relevant part of the appliance.		N/A
	NOTE 4 Small parts are as defined in IEC 60695-4.		N/A
	Where a non-metallic material is within 3 mm of a current carrying connection, but is shielded from the connection by a different material, the glow-wire test of IEC 60695-2-11 is carried out at the relevant temperature with the tip of the glow-wire applied to the interposed shielding material with the shielded material in place and not directly to the shielded material.		N/A

Attachment 1

IEC/EN 60335-1/A2			
Clause	Requirement + Test	Result - Remark	Verdict
30.2.3.2	<p>Parts of non-metallic material supporting current-carrying connections, and parts of non-metallic material within a distance of 3 mm of such connections, are subjected to the glow-wire test of IEC 60695-2-11. However, the glow-wire test is not carried out on parts of material classified as having a glow-wire ignition temperature according to IEC 60695-2-13 of at least</p> <ul style="list-style-type: none"> – 775 °C, for connections that carry a current exceeding 0,2 A during normal operation, – 675 °C, for other connections. 		N/A
	<p>If the glow-wire ignition temperature is not available for a sample with a thickness within</p> <p>± 0,1 mm of the relevant part, then the test sample shall have a thickness equal to the nearest preferred value specified in IEC 60695-2-13 that is no thicker than the relevant part.</p>		N/A
	<p>NOTE 1 The preferred values in IEC 60695-2-13 are 0,75 mm ± 0,1 mm, 1,5 mm ± 0,1 mm and 3,0 mm ± 0,2 mm.</p>		N/A
	<p>Where an non-metallic material is within 3 mm of a current carrying connection, but is shielded from the connection by a different material, the glow-wire test of IEC 60695-2-11 is carried out at the relevant temperature with the tip of the glow-wire applied to the interposed shielding material with the shielded material in place and not directly to the shielded material.</p>		N/A
	<p>When the glow-wire test of IEC 60695-2-11 is carried out, the temperatures are</p> <ul style="list-style-type: none"> – 750 °C, for connections that carry a current exceeding 0,2 A during normal operation, – 650 °C, for other connections. 		N/A
	<p>NOTE 2 Contacts in components such as switch contacts are considered to be connections.</p>		N/A
	<p>NOTE 3 The tip of the glow-wire is applied to the part in the vicinity of the connection.</p>		N/A

Attachment 1

IEC/EN 60335-1/A2			
Clause	Requirement + Test	Result - Remark	Verdict
	<p>If parts that withstand the glow-wire test of IEC 60695-2-11, but during the test produce a flame that persists for longer than 2 s, then these parts and adjacent parts are further tested as follows.</p> <p>Parts above the connection within the envelope of a vertical cylinder having a diameter of 20 mm and a height of 50 mm are subjected to the needle-flame test of Annex E.</p> <p>However, parts shielded by a flame barrier that meets the needle-flame test of Annex E are not tested.</p>		N/A
	The needle-flame test is not carried out on parts of material classified as V-0 or V-1 according to IEC 60695-11-10 provided that the test sample used for the classification was no thicker than the relevant part of the appliance.		N/A
30.2.4	Base material of printed circuit boards subjected to needle-flame test of annex E		N/A
	Test is not applicable to conditions as specified		N/A
32	RADIATION, TOXICITY AND SIMILAR HAZARDS		
	Appliance shall not emit harmful radiation, present a toxic or similar hazard due to their operation in normal use		P
	Compliance is checked by the limits or tests specified in Part 2. However, if no limits or tests are specified in Part 2, then the appliance is deemed to comply with the requirement without testing.		P
D	ANNEX D (NORMATIVE) THERMAL MOTOR PROTECTORS		
	Delete the note		P
E	ANNEX E (NORMATIVE) NEEDLE-FLAME TEST		N/A
	Needle-flame test carried out in accordance with IEC 60695-11-5, with the following modifications:		N/A
7	Severities		
	The duration of application of the test flame is 30 s ± 1 s		N/A

Attachment 1

IEC/EN 60335-1/A2			
Clause	Requirement + Test	Result - Remark	Verdict
9	Test procedure		
9.1	The specimen so arranged that the flame can be applied to a vertical or horizontal edge as shown in the examples of figure 1		N/A
9.2	The first paragraph does not apply		N/A
	If possible, the flame is applied at least 10 mm from a corner		N/A
9.3	The test is carried out on one specimen		N/A
	If the specimen does not withstand the test, the test may be repeated on two additional specimens, both withstanding the test		N/A
11	Evaluation of test results		
	The duration of burning not exceeding 30 s		N/A
	However, for printed circuit boards, the duration of burning not exceeding 15 s		N/A
J	ANNEX J (NORMATIVE) COATED PRINTED CIRCUIT BOARDS		
	Testing of protective coatings of printed circuit boards carried out in accordance with IEC 60664-3 with the following modifications:		N/A
5.7	Conditioning of the test specimens		
	When production samples are used, three samples of the printed circuit board are tested		N/A
5.7.1	Cold		
	The test is carried out at -25°C		N/A
5.7.3	Rapid change of temperature		
	Severity 1 is specified		N/A
5.9	Additional tests		
	This subclause is not applicable		N/A
Q	ANNEX Q (INFORMATIVE) SEQUENCE OF TESTS FOR THE EVALUATION OF ELECTRONIC CIRCUITS		
	Replace "19.10 " by " 19.10 and 19.14" in two places.		N/A

Attachment 1

EN 60335-1/A12			
Clause	Requirement + Test	Result - Remark	Verdict
	Test procedure		
29.3	Replace the third dashed item by: Assessment of thermal quality of the material combined with an electric strength test.		N/A
29.3.Z1	If accessible reinforced insulation consist of a single layer, the thickness of this layer comply with Table Z1		N/A

EN 60335-1:2002/A13:2008			
Clause	Requirement – Test	Result – Remark	Verdict
24	Components		N/A
24.1.7.	Remote operation is via telecommunication network. (Telecommunication interface circuitry: EN 41003 and EN 60950-1:2006, subclause 6.3)		N/A

